

产品展示

Product Display



产品目录

Product catalogue



SAE对开法兰压板FH-- SAE split flange halves -----	P ₈
SAE 对开平法兰压板HF-- SAE split flange halves-flat -----	P ₉
SAE 全法兰压板VF-- SAE flange clamp -----	P ₁₀
SAE螺纹孔全法兰VFM-- SAE flange camp with thread -----	P ₁₁ ~P ₁₃
SAE 法兰焊管组合件-- SAE flange welding couplings -----	P ₁₂
SAE 法兰焊管组合件 (AFS BFS轻型3000psl) SAE flange welding couplings(ASF BSF light 3000psl)-----	P ₁₄
SAE 法兰焊管组合件 (AFS BFS重型3000psl) SAE flange welding couplings(ASF BSF heavy 3000psl)-----	P ₁₅
SAE法兰焊管组合件 (90°弯) AWF-- SAE flange welding couplings(90°) -----	P ₁₆
SAE三通法兰SFV-- SAE tee flange SFV -----	P ₁₇
SAE法兰式过渡接头 (标准型) GSF-- SAE flange adapter(standard series) -----	P ₁₈
SAE法兰式过渡接头 (重型) GSF-- SAE flange adapter(High pressure series) -----	P ₁₉
SAE法兰式90°弯过渡接头 (标准型) GWF--Wilbow SAE flange adapter(standard series)-----	P ₂₀

产品目录

Product catalogue



SAE 法兰式90°弯过渡接头 (重型) GWF--Elbow SAE flange adapter(High pressure series)-----	P ₂₁
SAE 24°内锥螺纹法兰AFM-- SAE flange with 24° cone end -----	P ₂₂
SAE 24°内锥90°弯螺纹法兰AFMW-- SAE elbow flange with 24° cone end-----	P ₂₃
泵油口方形法兰接头GF--LK-- Pump flange connection-----	P ₂₄
泵油口90°弯方形法兰接头WF--LK-- Elbow pump flange connection-----	P ₂₅
SAE沉插式焊接法兰AFS--S-- SAE socket weld flange-----	P ₂₆
SAE沉插式焊接法兰GFS--S-- SAE socket weld flange-----	P ₂₇
SAE90°弯沉插式焊接法兰AFW--S SAE elbow socket weld flange-----	P ₂₈
SAE管螺纹法兰AFS--G SAE BSPP thread flange-----	P ₂₉
SAE管螺纹法兰GFS--G SAE BSPP thread flange-----	P ₃₀
SAE90°管螺纹法兰AFW--G SAE elbow BSPP thread flange-----	P ₃₁
SAE美制锥管螺纹 (NPT) 法兰AFS--N SAE NPT thread flange-----	P ₃₂

产品目录

Product catalogue



SAE美制锥管螺纹 (NPT) 法兰GFS--N SAE NPT thread flange-----	P ₃₃
SAE90°美制锥管螺纹 (NPT) 法兰AFW--N SAE elbow NPT thread flange-----	P ₃₄
SAE对焊焊接法兰AFS--T SAE weld on flange-----	P ₃₅
SAE对焊焊接法兰GFS--T SAE weld on flange-----	P ₃₆
SAE直角焊接法兰AFW--T SAE elbow weld on flange-----	P ₃₇
SAE低压焊接平法兰AFC--S SAE socket weld flange 500 P.S.I.-----	P ₃₈
SAE法兰盖AFC-- SAE closed flange -----	P ₃₉
SAE螺纹孔法兰盖GFC-- SAE closed flange -----	P ₄₀
ISO6164方形法兰系列 FA/FK -----	P ₄₁
ISO6164方形法兰系列 (PN10-64/series O) -----	P ₄₂
ISO6164方形法兰系列 (PN160-series 2)-----	P ₄₃
ISO6164方形法兰系列 (PN250-series 3) -----	P ₄₄

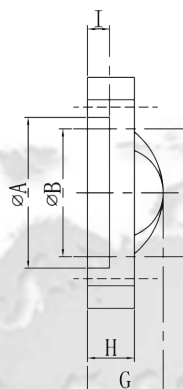
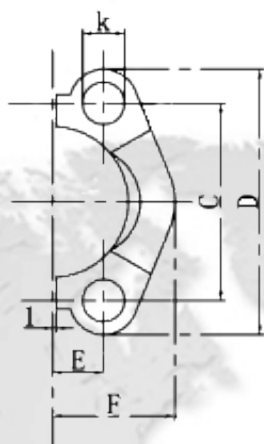
产品目录

Product catalogue



ISO6164-1方形法兰系列 (PN320/series4)-----	P ₄₅
ISO6164方形法兰系列 (PN400/series 5)-----	P ₄₆
ISO6164方形法兰三通 FV-----	P ₄₇
ISO616490°弯法兰系列 WFA-----	P ₄₈
扩口法兰 SAE 3000PSI SAE J 518 Code 61-----	P ₄₉ ~P ₅₂
扩口法兰 SAE 6000PSI SAE J 518 Code 62-----	P ₅₃ ~P ₅₅
L/F1G 直通方法兰-----	P ₅₆
L/F2G 直角方法兰-----	P ₅₇
L/F3G 三通方法兰-----	P ₅₈

SAE 对开法兰压板FH-- SAE split flange halves

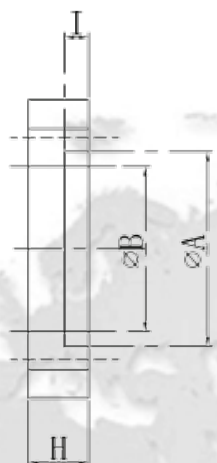


材料 (Material)

- 1. 45#碳钢, 表面镀锌钝黄 :FH***-C45 A3C
表面Cr+3百锌
Cr+3 white zinked :FH***-A3C
表面镀锌镍合金 Ni-Zn zinked :FH***-ZN
- 2. 不锈钢AISI 321/304 :FH***-X
- 3. 不锈钢AISI 316 :FH***-XX

norma l	type	尺寸参数										配用螺栓规格		单重 kg	最大工 作压力 kg/cm		
		A	B	C	D	E	F	G	H	I	K	M	unc				
inch	轻型 3000P.S.I																
1/2	FH301	31	24.5	38.1	54	8.75	23	19	13	6.20	8.5	M8	5/16	0.07	345		
3/4"	FH302	38.9	32.15	47.63	65	11.13	25.9	22	14.3	6.20	10.5	M10	3/8	0.10	345		
1"	FH303	45.25	38.8	52.37	70	13.08	29.2	24	16	7.50	10.9	M10	3/8	0.12	345		
1 1/4	FH304	51.6	43.7	58.72	79	15.09	36.3	24	16	7.50	10.9	M10	---	0.18	276		
1 1/4	FH304/U	51.6	43.7	58.72	79	15.09	36.3	24	16	7.50	11.2	---	7/16	0.18	276		
1 1/4	FH304/12	51.6	43.7	58.72	79	15.09	36.3	24	16	7.50	12.5	M12	---	0.18	276		
1 1/2	FH305	61.1	50.8	69.85	94	17.86	41	25	16	7.50	13.5	M12	1/2	0.23	207		
2"	FH306	72.25	62.75	77.77	102	21.44	48.2	26	16	9.00	13.5	M12	1/2	0.26	207		
2"	FH306/14	72.25	62.75	77.77	102	21.44	48.2	26	16	9.00	14.5	M14	---	0.26	207		
2 1/2	FH307	84.95	74.95	88.9	114	25.4	54	38	19	9.00	13.5	M12	1/2	0.42	172		
3"	FH308	102.4	90.95	106.38	135	30.96	65.3	41	22	9.00	17	M16	5/8	0.68	138		
3 1/2	FH309	115.1	102.4	120.65	152	34.92	69.5	28	22	10.70	17	M16	5/8	0.62	34		
4"	FH310	127.8	115.1	130.18	162	38.88	76	35	25	10.70	17	M16	5/8	0.85	34		
5"	FH311	153.2	140.5	152.4	184	46.04	90	41	28	10.70	17	M16	5/8	1.20	34		
	重型 6000P.S.I																
1/2"	FH601	32.55	24.65	40.49	56	9.12	23.6	22	16	7.02	8.5	M8	5/16	0.09	414		
3/4"	FH602	42.16	32.5	50.8	71	11.91	30	28	19	8.25	10.5	M10	3/8	0.17	414		
1"	FH603	48.4	38.9	57.17	81	13.89	34.8	33	24	9.00	13	M12	7/16	0.26	414		
1 1/4	FH604/12	54.8	44.5	66.68	95	15.88	38.6	38	27	9.80	13.5	M12	1/2	0.40	414		
1 1/4	FH604	54.8	44.5	66.68	95	15.88	38.6	38	27	9.80	14.5	M14	---	0.40	414		
1 1/2	FH605	64.3	51.6	79.38	113	18.26	47.5	43	30	12.00	17	M16	5/8	0.68	414		
2"	FH606	80.2	67.6	96.82	133	22.23	56.9	52	37	12.00	21	M20	3/4	1.05	414		
2 1/2	FH607	108.9	90	123.8	180	29.4	75	45	45	20.50	25	M24	---	2.10	414		
3"	FH608	132.5	115	152.4	215	35.8	99	55	55	25.50	32	M30	---	4.25	414		

SAE 对开平法兰压板HF-- SAE split flange halves-flat



材料 (Material)

60#碳钢, 表面镀锌钝黄

:FH***--C60 A3C

表面Cr+3白锌 Cr+3 white zinked :FH***--A3C

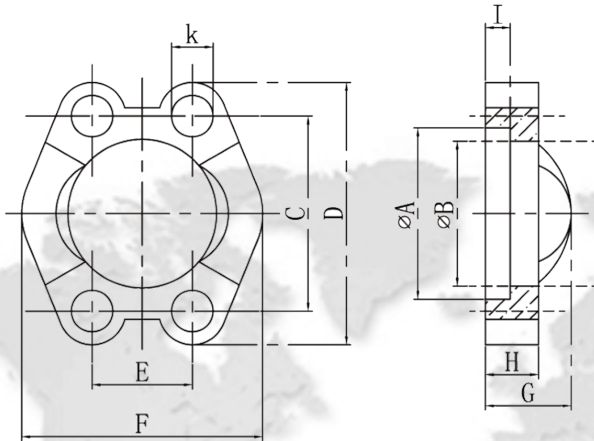
表面镀锌合金 Ni-Zn zinked

:FH***--ZN

2

norml flaeae	type	尺寸参数									配用螺栓规格		单重 kg	最大工作压力 kg/cm	
		A	B	C	D	E	F	H	I	K	M	unc			
inch	轻型 3000 P.S.I														
1/2"	HF301	31.00	24.50	38.10	54	8.75	23.00	13	6.20	8.50	M8	5/16	0.06	345	
3/4"	HF302	38.90	32.15	47.63	65	11.13	25.90	14.3	6.20	10.50	M10	3/8	0.09	345	
1"	HF303	45.25	38.80	52.37	70	13.08	29.20	16	7.50	10.90	M10	3/8	0.11	345	
1 1/4"	HF304	51.60	43.70	58.72	79	15.09	36.30	16	7.50	10.90	M10	---	0.16	276	
1 1/2"	HF305	61.10	50.80	69.85	94	17.86	41	16	7.50	13.5	M12	1/2	0.22	207	
2"	HF306	72.75	62.75	77.77	102	21.44	48.2	16	9.00	13.50	M12	1/2	0.25	207	
	重型 6000 P.S.I														
1/2"	HF601	32.55	24.65	40.49	56	9.12	23.60	16	7.20	8.50	M8	5/16	0.08	414	
3/4"	HF602	42.10	32.5	50.8	71	11.91	30.00	19	8.25	10.50	M10	3/8	0.16	414	
1"	HF603	48.40	38.9	57.17	81	13.89	34.80	24	9.00	13.00	M12	7/16	0.25	414	
1 1/4"	HF604	54.80	44.5	66.68	95	15.88	38.60	27	9.80	14.50	M14	---	0.38	414	
1 1/2"	HF605	64.30	51.6	79.38	113	18.26	47.50	30	12.00	17.00	M16	5/8	0.65	414	
2"	HF606	80.20	67.6	96.82	133	22.23	56.90	37	12.00	21.00	M20	3/4	1	414	

SAE 全法兰压板VF-- SAE flange clamp

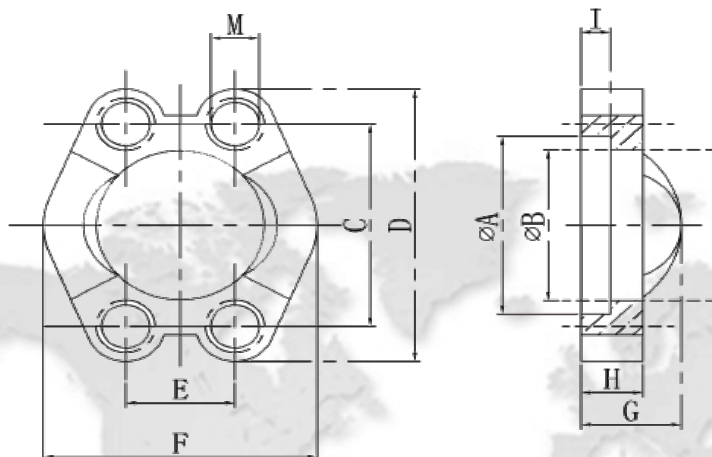


材料 (Material)

- 1.45#碳钢, 表面镀锌钝黄 :VF***-C45 A3C
- 表面Cr+3百锌 :VF***-CFX
- Cr+3 white zinked :VF***-ZN
- 表面锌镍合金 Ni-Zn zinked :VF***-X
- 2.不锈钢AISI 321/304 :VF***-X
- 3.不锈钢AISI 316 :VF***-XX

normal flange size	type	尺寸参数										配用螺栓规格		单重 kg	最大工作压力 kg/cm ²	
		A	B	C	D	E	F	G	H	I	K	M	unc			
	轻型 3000P.S.I															
1/2"	VF301	31.00	24.50	38.10	54	17.50	46	19	13	6.20	8.5	M8	5/16	0.15	345	
3/4"	VF302	38.90	32.15	47.63	65	22.26	51.8	22	14.3	6.20	10.5	M10	3/8	0.21	345	
1"	VF303	45.25	38.80	52.37	70	26.16	58.4	24	16	7.50	10.9	M10	3/8	0.25	345	
1 1/4"	VF304	51.60	43.70	58.72	79	30.18	72.6	24	16	7.50	10.9	M10	---	0.36	276	
1 1/4"	VF304/U	51.60	43.70	58.72	79	30.18	72.6	24	16	7.50	12.0	---	7/16	0.36	276	
1 1/4"	VF304/12	51.60	43.70	58.72	79	30.18	72.6	24	16	7.50	12.5	M12	---	0.36	276	
1 1/2"	VF305	61.10	50.80	69.85	94	35.72	82.2	25	16	7.50	13.5	M12	1/2	0.48	207	
2"	VF306	72.25	62.75	77.77	102	42.88	96.4	26	16	9.00	13.5	M12	1/2	0.52	207	
2"	VF306/14	72.25	62.75	77.77	102	42.88	96.4	26	16	9.00	14.6	M14	---	0.52	207	
2 1/2"	VF307	84.95	74.95	88.90	114	50.80	108	38	19	9.00	13.3	M12	1/2	0.85	172	
3"	VF308	102.40	90.95	106.38	135	61.92	130.6	41	22	9.00	17	M16	5/8	1.38	138	
3 1/2"	VF309	115.10	102.40	120.65	152	69.84	139	28	22	10.70	17	M16	5/8	1.50	34	
4"	VF310	127.80	115.10	130.18	162	77.76	152	35	25	10.70	17	M16	5/8	1.70	34	
5"	VF311	153.20	140.50	152.40	184	92.08	180	41	28	10.70	17	M16	5/8	2.50	34	
	重型 6000P.S.I															
1/2"	VF601	32.55	24.65	40.49	56	18.24	47.2	22	16	7.20	8.5	M8	5/16	0.19	414	
3/4"	VF602	42.10	32.50	50.80	71	23.80	60	28	19	8.25	10.5	M10	3/8	0.35	414	
1"	VF603	48.40	38.90	57.17	81	27.78	69.6	33	24	9.00	13.0	M12	7/16	0.54	414	
1 1/4"	VF604/12	54.80	44.50	66.68	95	31.76	77.2	38	27	9.80	13.5	M12	1/2	0.80	414	
1 1/4"	VF604	54.80	44.50	66.68	95	31.76	77.2	38	27	9.80	14.5	M14	---	0.80	414	
1 1/2"	VF605	64.30	51.60	79.38	113	36.52	95	43	30	12.00	17	M16	5/8	1.40	414	
2"	VF606	80.20	67.60	96.82	133	44.46	113.8	52	37	12.00	21	M20	3/4	2.10	414	
2 1/2"	VF607	108.90	90.0	123.80	180	58.80	150	45	45	20.5	25	M24	---	4.30	414	
3"	VF608	132.50	115.0	152.40	215	71.60	198	55	55	25.5	32.0	M30	---	8.60	414	

SAE螺纹孔全法兰VFM-- SAE flange camp with thread



材料 (Material)

- 1.45#碳钢, 表面镀锌钝黄 :VFM***--C45 A3C
- 表面Cr+3百锌 :VFM***--CFX
- Cr+3 white zinked
- 表面锌镍合金 Ni-Zn zinked :VFM***--ZN
- 2.不锈钢AISI 321/304 :VFM***--X
- 3.不锈钢AISI 316 :VFM***--XX

normal flange size	type	尺寸参数									配用螺栓规格		单重 kg	最大工作压力 kg/cm ²	
		A	B	C	D	E	F	G	H	I	M	unc			
inch	轻型 3000P.S.I														
1/2"	VFM301	31.00	24.50	38.10	54	17.50	46	19	13	6.20	M8	5/16	0.15	345	
3/4"	VFM302	38.90	32.15	47.63	65	22.26	51.8	22	14.3	6.20	M10	3/8	0.21	345	
1"	VFM303	45.25	38.80	52.37	70	26.16	58.4	24	16	7.50	M10	3/8	0.25	345	
1 1/4"	VFM304	51.60	43.70	58.72	79	30.18	72.6	24	16	7.50	M10	---	0.36	276	
1 1/4"	VFM304/12	51.60	43.70	58.72	79	30.18	72.6	24	16	7.50	M12	7/16	0.36	276	
1 1/2"	VFM305	61.10	50.80	69.85	94	35.72	82.2	25	16	7.50	M12	1/2	0.48	207	
2"	VFM306	72.25	62.75	77.77	102	42.88	96.4	26	16	9.00	M12	1/2	0.52	207	
2 1/2"	VFM307	84.95	74.95	88.90	114	50.80	108	38	19	9.00	M12	1/2	0.85	172	
3"	VFM308	102.40	90.95	106.38	135	61.92	130.6	41	22	9.00	M16	5/8	1.38	138	
3 1/2"	VFM309	115.10	102.40	120.65	152	69.84	139	28	22	10.70	M16	5/8	1.50	34	
4"	VFM310	127.80	115.10	130.18	162	77.76	152	35	25	10.70	M16	5/8	1.70	34	
5"	VFM311	153.20	140.50	152.40	184	92.08	180	41	28	10.70	M16	5/8	2.50	34	
	重型 6000P.S.I														
1/2"	VFM601	32.55	24.65	40.49	56	18.24	47.2	22	16	7.20	M8	5/16	0.19	414	
3/4"	VFM602	42.10	32.50	50.80	71	23.80	60	28	19	8.25	M10	3/8	0.35	414	
1"	VFM603	48.40	38.90	57.17	81	27.78	69.6	33	24	9.00	M12	7/16	0.54	414	
1 1/4"	VFM604/12	54.80	44.50	66.68	95	31.76	77.2	38	27	9.80	M12	1/2	0.80	414	
1 1/4"	VFM604	54.80	44.50	66.68	95	31.76	77.2	38	27	9.80	M14	---	0.80	414	
1 1/2"	VFM605	64.30	51.60	79.38	113	36.52	95	43	30	12.00	M16	5/8	1.40	414	
2"	VFM606	80.20	67.60	96.82	133	44.46	113.8	52	37	12.00	M20	3/4	2.10	414	

SAE 法兰焊管组合件 SAE flange welding couplings

材料说明:

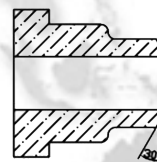
SAE 法兰组合件有碳钢和不锈钢材料可选择，用型号加后缀来区分：

- 1：全碳钢件时：不加后缀或加-ST
- 2：法兰件用碳钢，焊管用不锈钢AISI304/321时：后缀加-ST/X 焊管用不锈钢AISI316时：后缀加-ST/XX
- 3：法兰焊管都为不锈钢时：用AISI304/321,加后缀-X;用AISI316,加后缀-XX

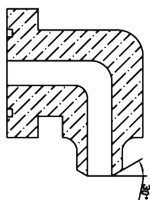
SFJ-
带O槽焊管
例：SFJ 304-42.3x4 SFJ 304-42.3x4-X
安装尺寸见P14~P15



SFJN-
光面焊管
例：SFJN 304-42.3x4-XX
安装尺寸见P14~P15



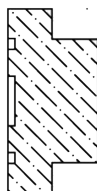
WFJ-
带O槽90°焊管
例：WFJ 304-42.3x4



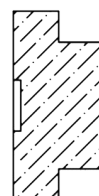
WFJN-
光面90°焊管
例：WFJN 304-42.3x4



MG-
带O槽闷盖
例：MG 304
MG304-X

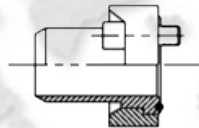


MGN-
光面闷盖
例：MGN 304
MGN304-X

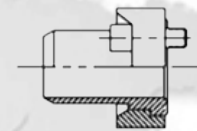


SAE法兰焊接管组合件 SAE flange welding couplings

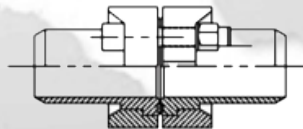
ASF-(JB4187-97 A型)
对开法兰压板 (FH) 二只 带O
槽焊接管一只 (SFJ-)
O型圈一只 螺栓一组
示例: ASF 306-60.3x5.6
ASF 306-60.3x5.6-ST/X
安装尺寸见P14~P15



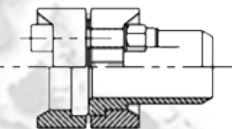
ASFN-
全法兰压板(VF)一只
光面焊管一只 (SFJN-) 螺栓
一组
示例: ASFN306U-60.3x5.6-X
(配美制螺栓) 安装尺
寸见P14~P15



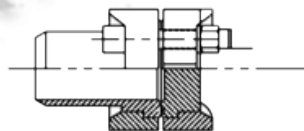
BSF-(JB4187-97 B型)
对开法兰压板 (FH) 二只 全法
兰压板 (VF) 一只
配对焊管 (SFJ+SFJN) 各一
只 O型圈一只
螺栓一组
示例: BSF 308-76.1x4/89 x4-
X
(两头焊管不一致时)



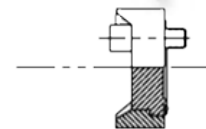
CSF-(JB4187-97 C型)-
对开法兰压板 (FH) 二只
全法兰压板(VF)一只
光面焊管一只 (SFJN-) 螺
栓一组
示例: CSF 305-48.3x3.6-X



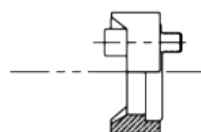
DSF-(JB4187-97 D型)
对开法兰压板 (FH) 二只-
全法兰压板(VF)一只
带O槽闷盖 (MG) 一只 光
面焊管 (SFJN) 一只
O形密封圈一只 螺栓一组
示例: DSF 606-60.3x10



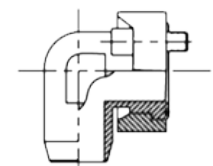
ESF-(JB4187-97 E型)
对开法兰压板 (FH) 二
只 带O槽闷盖 (MG) 一
只
O形密封圈一只 螺栓一组
示例: ESF 303U-X
(配美制螺栓)



FSF-(JB4187-97 F型)
对开法兰压板 (FH) 二只-
O形圈一只 螺栓一组
示例: FSF 605
FSF 605U
(配美制螺栓)

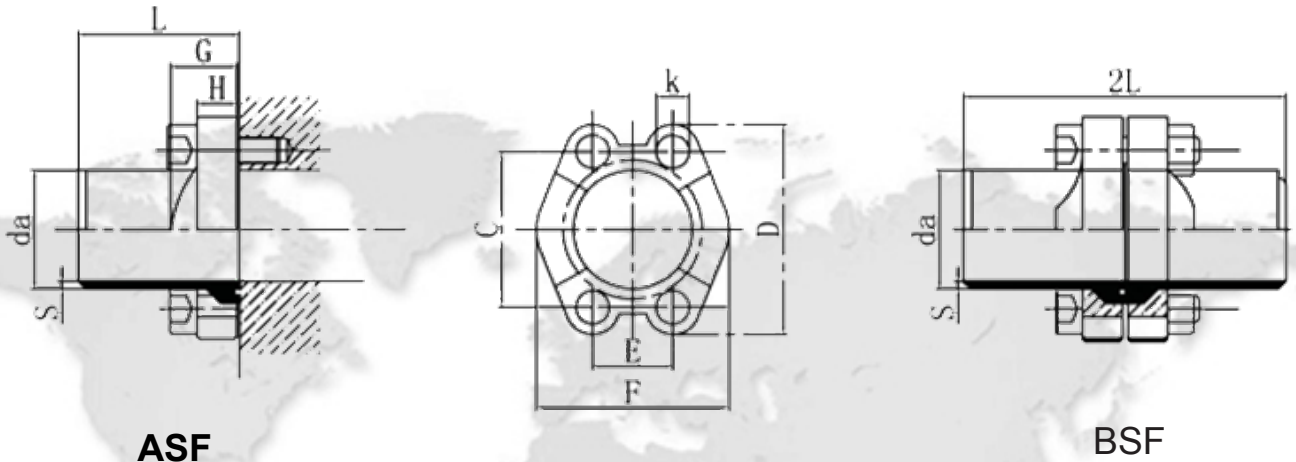


AWF-(ASF—的90°弯形式)
对开法兰压板 (FH) 二只-
90°弯带O槽焊管 (WFJ-) 一
只 O形圈一只
螺栓一组
示例: AWF 604-42 x 5



SAE 法兰焊管组合件 (AFS BFS轻型3000psi)

SAE flange welding couplings(ASF BSF light 3000psi)



Series-3000psi轻型系列

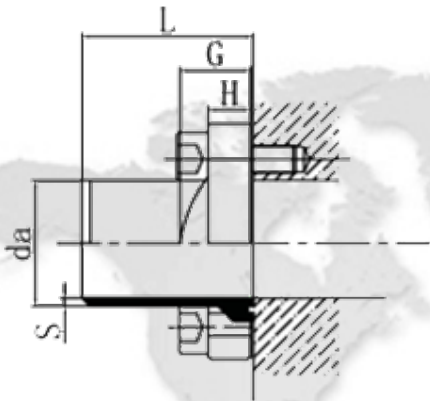
da x a 为焊管的对焊部位尺寸 (外径x壁厚) , 在通常情况下做成30°焊接坡口。样本所列为我公司常备规格, 也可根据用户要求订制。

公称尺寸 inch	编号 type	尺寸参数								配用附件		单重 Kg	最大 工作压力 kg/ cm ²
		daxa		C	D	E	F	L	K	螺栓	O型圈		
1/2"	ASF301	16×3	20×3	38.10	54	17.50	46	30	8.5	M8×25 M8×40	18.66×3.53	0.28 0.52	345
	BSF301	22×3	22×4.5										
3/4"	ASF302	20×3	20×3	47.63	65	22.26	51.8	35	10.5	M10×30 M10×45	25.00×3.53	0.44 0.85	345
	BSF302	35×3	22×4.5										
		26.9×3.6	30×5										
1"	ASF303	25×3	28×3	52.37	70	26.16	58.4	40	10.9	M10×30 M10×50	32.92×3.53	0.56 1.10	345
	BSF303	30×4	33.7×4										
		35×5	38×5										
1 1/4"	ASF304	30×4	34×5	58.72	79	30.18	72.6	45	10.9	M10×30 M10×50	32.92×3.53	0.72 1.40	276
	BSF304	38×4	38×6										
		42.4×4	43×6										
1 1/2"	ASF305	38×4	42.4×4	69.85	94	35.72	82.2	50	13.5	M12×35 M12×55	47.22×3.53	0.92 1.80	207
	BSF305	48.3×3.6	48.3×5										
		50×6											
2"	ASF306	42.4×4	48.3×5	77.77	102	42.88	96.4	60	13.5	M12×35 M12×55	56.75×3.53	1.30 2.50	207
	BSF306	50×6	57×3.5										
		60.3×4	60.3×5.6										
		60.3×8	62×7.5										
2 1/2"	ASF307	76.1×4	***	88.90	114	50.80	108	70	13.5	M12×40 M12×55	69.45×3.53	1.80 3.50	172
	BSF307	76.1×5.5											
		76.1×7.1											
3"	ASF308	76.1×4	76.1×7.1	106.38	135	61.92	131	70	17	M16×45 M16×70	85.32×3.53	2.60 5.10	138
	BSF308	89×4	89×8										
		90×10											
3 1/2"	ASF309	76.1×4	89×4	120.65	152	69.84	139	80	17	M16×45 M16×70	98.02×3.53	3.00 5.80	34
	BSF309	101.6×7.1											
4"	ASF310	89×5	114.3×4	130.18	162	77.76	152	80	17	M16×50 M16×75	110.72×3.53	3.50 6.70	34
	BSF310	114.3×6	114.3×8										
5"	ASF311	133×4		152.40	184	92.08	180	80	17	M16×50 M16×80	136.12×3.53	4.50 8.60	34
	BSF311	140×4											
		140×10											

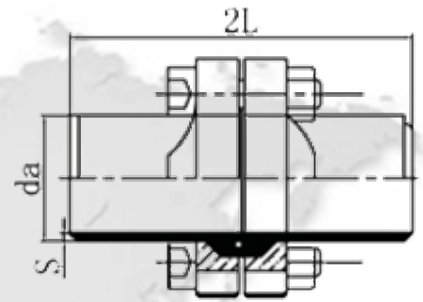
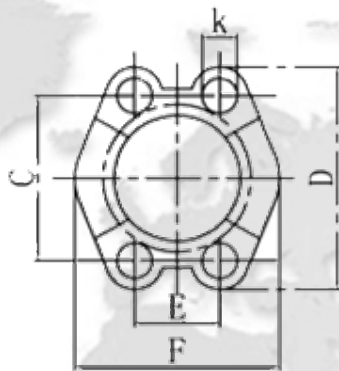
*** ASF307/BSF307焊接设计外径为76.1时焊管实际外径为74.5

SAE 法兰焊管组合件 (AFS BFS重型6000psi)

SAE flange welding couplings(ASF BSF heavy 6000psi)



ASF



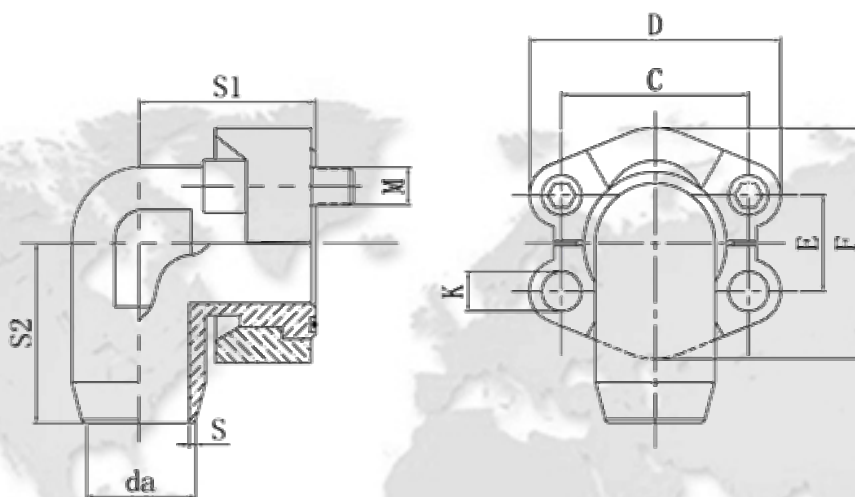
BSF

Series-6000psi重型系列

da x a 为焊管的对焊部位尺寸 (外径x壁厚), 在通常情况下做成30°焊接坡口。样本所列为我公司常备规格, 也可根据用户要求订制。

公称尺寸 inch	编号 type	尺寸参数								配件附件		单重 Kg	最大 工作压力 kg/ cm ²
		daxa		C	D	E	F	L	K	螺栓	O型圈		
1/2"	ASF601 BSF601	16x3 20x3	18x4 22x4.5	40.49	56	18.24	47.2	40	8.5	M8x30 M8x45	18.66x3.53	0.35 0.67	414
3/4"	ASF602 BSF602	20x3 25x4 28x5	22x4 26.9x5.6 35x6.5	50.80	71	23.80	60	45	10.5	M10x35 M10x55	25.00x3.53	0.68 1.30	414
1"	ASF603 BSF603	25x4 33.7x7.1 38x5	30x5 35x5	57.17	81	27.78	69.6	50	13.0	M12x45 M12x65	32.92x3.53	1.06 2.00	414
1 1/4"	ASF604 BSF604	30x5 42.4x6 44x7.5	38x6 42.4x8	66.68	95	31.76	77.2	55	14.5	M14x50 M14x75	37.70x3.53	1.58 3.0	414
1 1/2"	ASF605 BSF605	38x6 48.3x8 50x6	48.3x6 48.3x8.8 51x8	79.38	113	36.52	95	60	17	M16x55 M16x85	47.22x3.53	2.50 4.80	414
2"	ASF606 BSF606	48.3x6 60.3x6.3 60.3x10 63x10	57x6 60.3x8 61x9 65x11	96.82	133	44.46	114	70	21	M20x70 M20x100	56.75x3.53	4.30 8.20	414
2 1/2"	ASF607 BSF607	76.1x12.5 89x11 89x14.2		123.8	180	50.80	150	80	25	M24x80 M24x130	75.00x5.33	8.50 16.50	414
3"	ASF608 BSF608	89x14.2 108x12.5 114.3x17.5	114.3x14.2 114.3x20	152.4	215	71.6	198	100	32.0	M30x90 M30x150	88.60x5.7 98.60x5.7	16.80 32.80	414

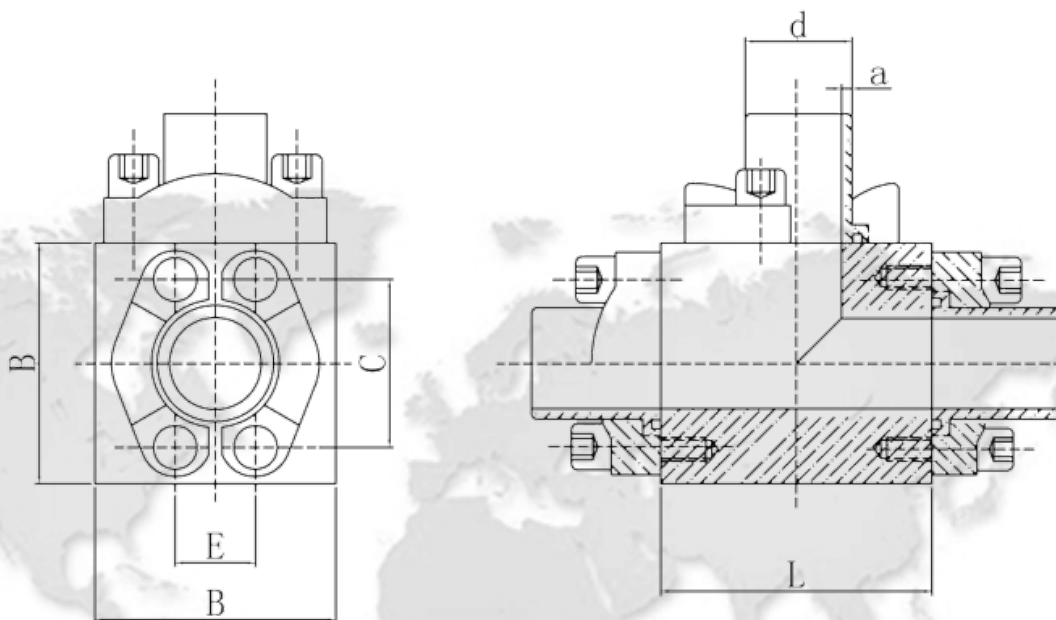
SAE法兰焊管组合件(90°弯)AWF-- SAE flange welding couplings(90°)



da x a 为焊管的对焊部位尺寸（外径x壁厚），在通常情况下做成30°焊接坡口。样本所列为我公司常备规格，也可根据用户要求订制。

公尺寸 inch	编号 type	尺寸参数								配用附件		单重 Kg	最大 工作压力 kg/cm ²
		daxa	C	D	E	F	S1	S2	K	螺栓	O形圈		
1/2"	AWF301	20x2.5 21.3x2.9 22x3	38.10	54	17.50	46	39	38	8.5	M8x25	18.66x3.53	0.40	345
3/4"	AWF302	22x3 25x3 26.9x3.6	47.63	65	22.26	51.8	42	45	10.5	M10x30	25.00x3.53	0.60	345
1"	AWF303	30x4 33.7x3.6 35x4	52.37	70	26.16	58.4	45	48	10.9	M10x30	32.92x3.53	0.80	345
1 1/4"	AWF304	38x3 42.4x4	58.72	79	30.18	72.6	50	59	10.9	M10x35	37.70x3.53	1.20	250
1 1/2"	AWF305	42.4x4 48.3x5	69.85	94	35.72	82.2	55	64	13.5	M12x35	47.22x3.53	1.60	200
1/2"	AWF601	16x3 20x3 22x3	40.49	56	18.24	47.2	39	38	8.5	M8x30	18.66x3.53	0.47	400
3/4"	AWF602	25.0x4 26.9x5.6 28x5	50.80	71	23.80	60	48	48	10.5	M10x35	25.00x3.53	0.90	400
1"	AWF603	30x5 33.7x7.1 35x5	57.17	81	27.78	69.6	60	55	13.0	M12x45	32.92x3.53	1.50	315
1 1/4"	AWF604	38x6 42.4x6	66.68	95	31.76	77.2	68	61	14.5	M14x50	37.70x3.53	2.20	315
1 1/2"	AWF605	38x6 48.3x8	79.38	113	36.52	95	76	72	17	M16x55	47.22x3.53	3.30	315

SAE三通法兰SFV-



公称尺寸 inch	编号 type	尺寸参数							三通块重量 kg	最大工作压力 kg/cm ²
		系列	daxa	B	C	E	L			
1/2"	SFV 301- 601-	3000	参见ASF	301- 601-	60	38.10	17.50	70	1.80	345
		6000		601- 601-	60	40.49	18.24	70		414
3/4"	SFV 302- 602-	3000	参见ASF	302- 602-	70	47.63	22.26	80	2.60	345
		6000		602- 602-	80	50.8	23.8	90		414
1"	SFV 303- 603-	3000	参见ASF	303- 603-	80	52.37	26.16	90	3.80	345
		6000		603- 603-	90	57.17	27.78	100		414
1 1/4"	SFV 304- 604-	3000	参见ASF	304- 604-	90	58.72	30.18	100	5.30	276
		6000		604- 604-	100	66.68	31.76	110		7.20
1 1/2"	SFV 305- 605-	3000	参见ASF	305- 605-	100	69.85	35.72	110	6.80	207
		6000		605- 605-	120	79.38	36.52	120		11.50
2"	SFV 306- 606-	3000	参见ASF	306- 606-	110	77.77	42.88	120	8.30	207
		6000		606- 606-	140	96.82	44.46	140		17.30

说明：

1. 三通法兰不跟后缀da x a时 表示仅订购三通块
如SFV301
不锈钢AISI321/304制时，SFV301-X 不
锈钢AISI316制时，SFV301-XX

2. 三通法兰后加da x a时

表示订购全套法兰（如上图）相当于一只三通SFV加3套ASF-

-X表示全套为不锈钢AISI321/304制

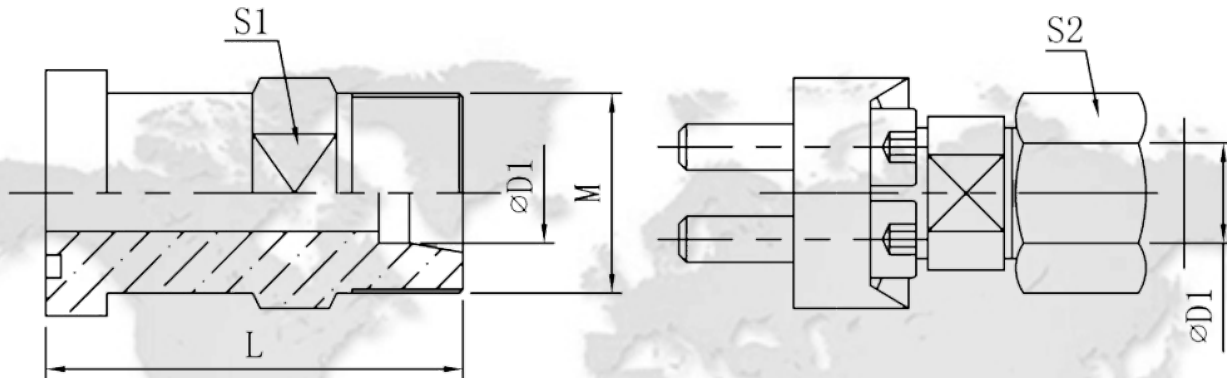
-XX表示全套为不锈钢AISI316制

-ST/X表示三通块及焊管为不锈钢AISI321/304,其余为碳钢

-ST/XX表示三通块及焊管为不锈钢AISI316,其余为碳钢

例：SFV301-16X2-ST/X

SAE法兰式过渡接头 (标准型) GSF-- SAE flange adapter(standard series)



材料 (Material)

- 1.45#碳钢, 表面镀锌钝黄 :GSF***--C45 A3C
表面Cr+3百锌 Cr+3 white zinked:GSF***--CFX
表面锌镍合金 Ni-Zn zinked :GSF***--ZN
- 2.不锈钢AISI 321/304 :GSF***--X
- 3.不锈钢AISI 316 :GSF***--XX

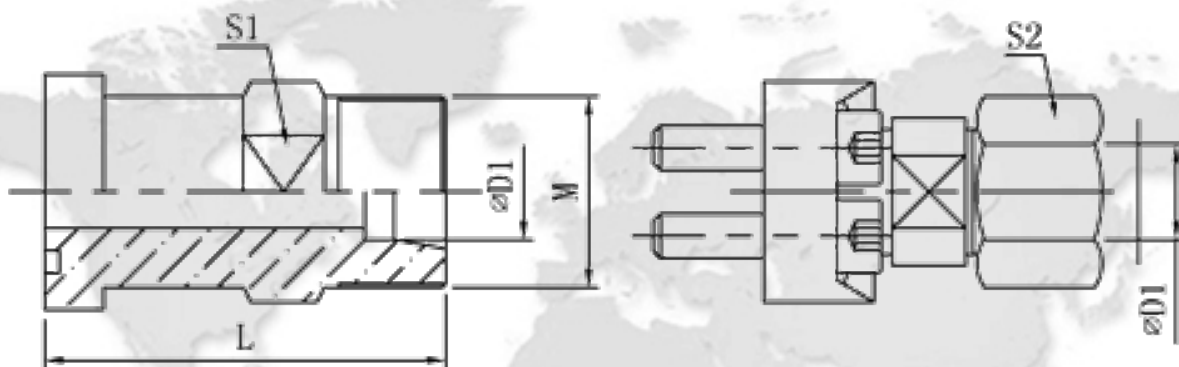
Series-3000psi轻型系列

公称尺寸	接头编号	钢管规格 D1	配用法兰	接头体螺纹 M	L1	S1	S2	最大 工作压力 kg/cm ²
1/2"	GSF301-15L	15L	FH301	M22X1.5	48	24	27	315
	GSF301-16S	16S		M24X1.5	50		30	350
3/4"	GSF302-18L	18L	FH302	M26X1.5	53.5	30	32	315
	GSF302-22L	22L		M30X2	53.5		36	160
	GSF302-20S	20S		M30X2	57.5		36	350
	GSF302-25S	25S		M36X2	57.5		46	350
1"	GSF303-28L	28L	FH303	M36X2	54.5	36	41	160
	GSF303-25S	25S		M36X2	58.5		46	350
	GSF303-30S	30S		M42X2	63.5		50	350
1 1/4"	GSF304-35L	35L	FH304	M45X2	58.5	41	50	160
	GSF304-25S	25S		M36X2	62		46	280
	GSF304-30S	30S		M42X2	62		50	280
	GSF304-38S	38S		M52X2	67		60	280
1 1/2"	GSF305-42L	42L	FH305	M52X2	64.5	46	60	160
	GSF305-38S	38S			70.5			210

订货说明:

1. 仅订接头体: GSF301-15L, GSF301-15L-X
2. 接头体配法兰、公制螺栓及O形圈, 加后缀M: GSF301-15LM, GSF301-15LM-X (配美制螺栓: GSF301-15LU)
3. 接头体配法兰、公制螺栓及O形圈, 同时配卡套及螺帽, 再加后缀KM: GSF301-15LMKM

SAE法兰式过渡接头 (重型) GSF-- SAE flange adapter(High pressure series)



材料 (Material)

- 1.45#碳钢, 表面镀锌钝黄 :GSF***--C45 A3C
- 表面Cr+3百锌 Cr+3 white zinked:GSF***--CFX
- 表面锌镍合金 Ni-Zn zinked :GSF***--ZN
- 2.不锈钢AISI 321/304 :GSF***--X
- 3.不锈钢AISI 316 :GSF***--XX

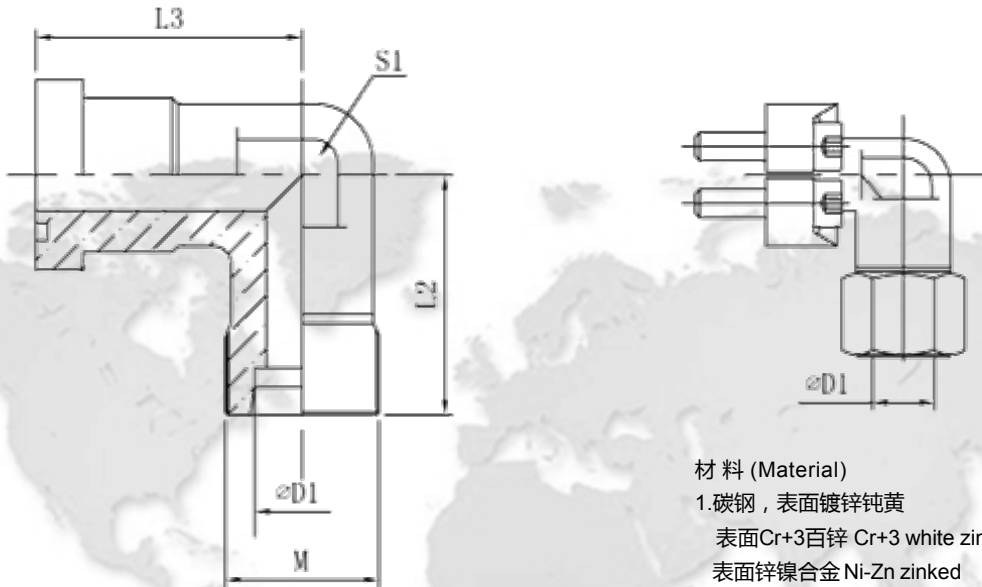
Series-6000psi重型系列

公称尺寸	接头编号	钢管规格 D1	配用法兰	接头体螺纹 M	L1	S1	S2	最大工作压力 kg/cm ²
1/2"	GSF601-16S	16S	FH601	M24X1.5	53.5	24	30	400
3/4"	GSF602-16S	16S	FH602	M24X1.5	60	30	30	400
	GSF602-20S	20S		M30X2	61.5		36	
	GSF602-25S	25S		M36X2	63.5		46	
1"	GSF603-25S	25S	FH603	M36X2	72	36	46	400
	GSF603-30S	30S		M42X2	74.5		50	
1 1/4"	GSF604-30S	30S	FH604	M42X2	80	41	50	400
	GSF604-38S	38S		M52X2	83		46	60
1 1/2"	GSF605-38S	38S	FH605	M52X2	89.5	46	60	315

订货说明：

1. 仅订接头体：GSF601-16S,GSF601-16S-X
2. 接头体配法兰、公制螺栓及O形圈，加后缀M:GSF601-16SM,GSF601-16SM-X(配美制螺栓：GSF601-16SU)
3. 接头体配法兰、公制螺栓及O形圈，同时配卡套及螺帽，再加后缀KM:GSF601-16SMKM

SAE法兰式90°弯过渡接头 (标准型) GWF-- Wlbow SAE flange adapter(standard series)



材料 (Material)

1. 碳钢, 表面镀锌钝黄 :GWF***--A3C
表面Cr+3百锌 Cr+3 white zinked:GWF***--CFX
表面锌镍合金 Ni-Zn zinked :GWF***--ZN
2. 不锈钢AISI 321/304 :GWF***--X
3. 不锈钢AISI 316 :GWF***--XX

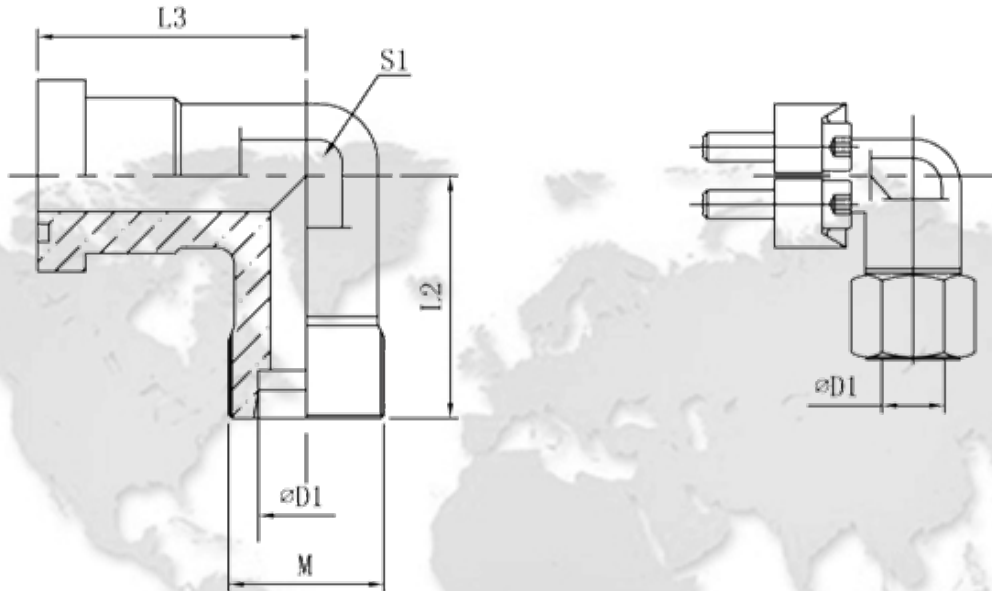
Series-3000psi轻型系列

公称尺寸	接头编号	钢管规格 D1	配用法兰	接头体螺纹 M	S1	L2	L3	最大工作压力 kg/cm ²
1/2"	GWF301-15L	15L	FH301	M22X1.5	24	36	39	315
	GWF301-16S	16s		M24X1.5		38		350
3/4"	GWF302-18L	18L	FH302	M26X1.5	30	39	42	315
	GWF302-22L	22L		M30X2		41		160
	GWF302-20S	20S		M30X2		43		350
	GWF302-25S	25S		M36X2		45		350
1"	GWF303-28L	28L	FH303	M36X2	36	44	45	160
	GWF303-25S	25S		M36X2		48		350
	GWF303-30S	30S		M42X2		47		350
1 1/4"	GWF304-35L	35L	FH304	M45X2	41	57	50	160
	GWF304-25S	25S		M36X2		55		280
	GWF304-30S	30S		M42X2		57		280
	GWF304-38S	38S		M45X2		59		280
1 1/2"	GWF305-42L	42L	FH305	M52×2	50	58	55	160
	GWF305-38S	38S				64		210

订货说明:

1. 仅订接头体: GWF301-15L, GWF301-15L-X
2. 接头体配法兰、公制螺栓及O形圈, 加后缀M: GWF301-15L, GWF301-15LM-X (配美制螺栓: GWF301-15LU)
3. 接头体配法兰、公制螺栓及O形圈, 同时配卡套及螺帽, 再加后缀KM: GWF301-15LMKM

SAE 法兰式90°弯过渡接头 (重型) GWF-- Elbow SAE flange adapter(High pressure series)



材料 (Material)

- 1. 碳钢, 表面镀锌钝黄 :GWF***--A3C
表面Cr+3百锌 Cr+3 white zinked:GWF***--CFX
表面锌镍合金 Ni-Zn zinked :GWF***--ZN
- 2. 不锈钢AISI 321/304 :GWF***--X
- 3. 不锈钢AISI 316 :GWF***--XX

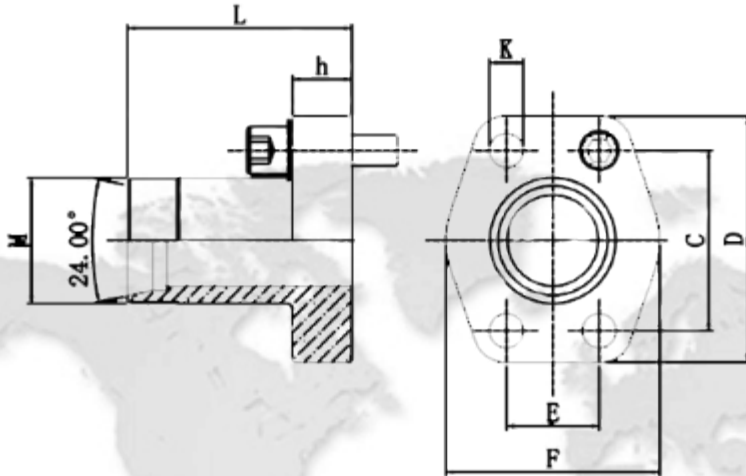
Series-6000psi重型系列

公称尺寸	接头编号	钢管规格 D1	配用法兰	接头体螺纹 M	S1	L2	L3	最大工作压力 kg/cm ²
1/2"	GWF601-16S	16S	FH601	M24X1.5	24	38	39	400
3/4"	GWF602-16S	16S	FH602	M24X1.5	32	45	48	400
	GWF602-20S	20S		M30X2		46		
	GWF602-25S	25S		M36X2		48		
1"	GWF603-25S	25S	FH603	M36X2	41	53	60	400
	GWF603-30S	30S		M42X2		55		
1 1/4"	GWF604-30S	30S	FH604	M42X2	46	58	68	400
	GWF604-38S	38S		M52X2	46	61		315
1 1/2"	GWF605-38S	38S	FH605	M52X2	50	72	76	315

订货说明：

1. 仅订接头体：GWF601-16S,GWF601-16S-X
2. 接头体配法兰、公制螺栓及O形圈，加后缀M:GWF601-16SM,GWF601-16SM-X(配美制螺栓：GWF601-16SU)
3. 接头体配法兰、公制螺栓及O形圈，同时配卡套及螺帽，再加后缀KM:GWF601-16SMKM

SAE 24°内锥螺纹法兰AFM-- SAE flange with 24° cone end



材料 (Material)

1. 碳钢Q345B, Carbon Steel Q345B

表面涂防锈油 Blank oiled :AFM***-A3C

表面镀锌纯黄 Yellow zinked :AFM***-CFX

表面Cr+3百锌 Cr+3 white zinked:AFM***-CFX

表面锌镍合金 Ni-Zn zinked :AFM***-ZN

2. 不锈钢AISI 321/304 :AFM***-X

3. 不锈钢AISI 316L :AFM***-XX

normal flange size	type	尺寸参数									配用螺栓规格		单重 kg	最大工作压力 kg/cm ²	
		钢管规格	C	D	E	F	h	K	L	M	螺栓	O形圈			
inch	轻型 3000P.S.I														
1/2"	AFM301	15L	38.10	54	17.48	46	16	9	47	M22X1.5	M8X25	18.66X3.53	0.35	345	
3/4"	AFM302	22L	47.63	65	22.23	50	18	11	52	M30X2.0	M10X30	25.00X3.53	0.60	250	
1"	AFM303	28L	52.37	70	26.19	55	18	11	60	M36X2.0	M10X30	32.92X3.53	0.80	250	
1 1/4"	AFM304	35L	58.72	79	30.18	68	21	11.5	60	M45X2.0	M10X30	37.70X3.53	1.00	250	
1 1/2"	AFM305	42L	69.85	93	35.17	78	25	13.5	70	M52X2.0	M12X35	47.22X3.53	1.50	200	
	重型 6000P.S.I														
1/2"	AFM601	16S	40.49	56	18.24	48	16	9	47	M24X1.5	M8X30	18.66x3.53	1.40	400	
3/4"	AFM602	20S	50.80	71	23.80	55	18	11	52	M30X2.0	M10X35	25.00x3.53	0.80	400	
1"	AFM603	25S	57.17	81	27.76	65	21	13	60	M36X2.0	M12X45	32.92x3.53	1.00	400	
1 1/4"	AFM604	30S	66.68	95	31.75	78	24	15	68	M42X2.0	M14X50	37.70x3.53	1.60	400	
1 1/2"	AFM605	38S	79.38	112	36.50	94	27	17	72	M52X2.0	M16X55	47.22x3.53	2.20	315	

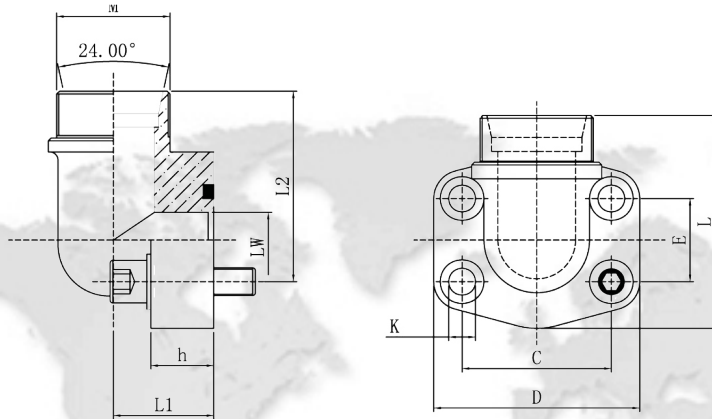
订货说明：

1. 仅订法兰：AFM301

2. 法兰配公制螺栓及O形圈：AFM301M(配美制螺栓：AFM301U)

3. 法兰配公制螺栓及O形圈,同时配卡套及螺帽,再加后缀KM：AFM301MKM

SAE 24°内锥90°弯螺纹法兰AFMW-- SAE elbow flange with 24° cone end



材料 (Material)

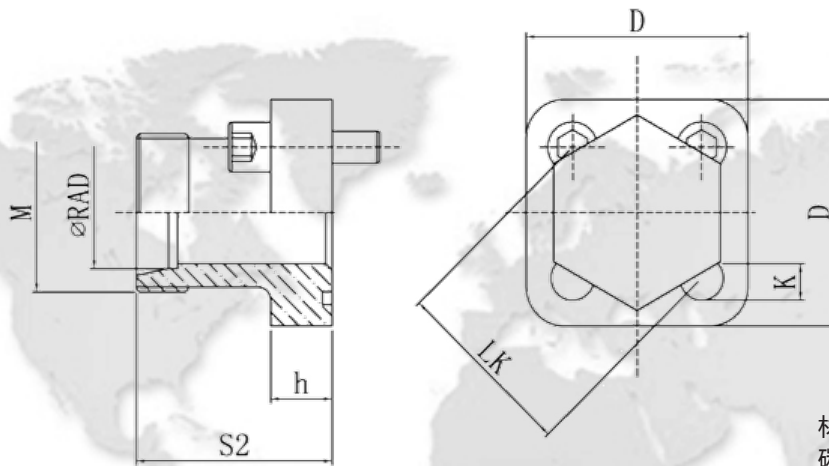
1. 碳钢Q345B, Carbon Steel Q345B
 - 表面涂防锈油 Blank oiled :AFMW***--A3C
 - 表面镀锌纯黄 Yellow zinked :AFMW***--CFX
 - 表面Cr+3百锌 Cr+3 white zinked:AFMW***--CFX
 - 表面镀锌合金 Ni-Zn zinked :AFMW***--ZN
2. 不锈钢AISI 321/304 :AFMW***--X
3. 不锈钢AISI 316L :AFM***--XX

normal flange size	type	尺寸参数										配用螺栓规格		单重 kg	最大工作压力 kg/cm ²		
		钢管规格	C	D	E	h	K	L	L1	L2	M	螺栓	O形圈				
inch	轻型 3000P.S.I																
1/2"	AFM301	15L	38.10	54	17.50	16	9	60	20	37	M22X1.5	M8X30	18.66X3.53	0.40	345		
3/4"	AFM302	22L	47.63	65	22.26	18	11	63	24	38	M30X2.0	M10X35	25.00X3.53	0.60	250		
1"	AFM303	28L	52.37	70	26.16	19	11	70	28	43	M36X2.0	M10X35	32.92X3.53	0.80	250		
1 1/4"	AFM304	35L	58.72	79	30.18	21	11.5	85	34	52	M45X2.0	M10X40	37.70X3.53	1.20	250		
1 1/2"	AFM305	42L	69.85	93	35.72	25	13.5	95	38	55	M52X2.0	M12X45	47.22X3.53	1.65	200		
	重型 6000P.S.I																
1/2"	AFM601	16S	40.49	54	18.24	16	9	60	20	37	M24X1.5	M8X30	18.66x3.53	0.50	400		
3/4"	AFM602	20S	50.80	71	23.80	19	11	70	28	43	M30X2.0	M10X35	25.00x3.53	1.25	400		
1"	AFM603	25S	57.17	79	27.78	21	13	85	34	51	M36X2.0	M12X40	32.92x3.53	1.50	400		
1 1/4"	AFM604	30S	66.68	93	31.76	25	15	95	38	56	M42X2.0	M14X45	37.70x3.53	1.80	400		
1 1/2"	AFM605	38S	79.38	112	36.52	25	17	110	42	65	M52X2.0	M16X45	47.22x3.53	2.80	315		

订货说明：

1. 仅订法兰：AFMW301
2. 法兰配公制螺栓及O形圈：AFM301MW(配美制螺栓：AFMW301U)
3. 法兰配公制螺栓及O形圈,同时配卡套及螺帽,再加后缀KM：AFMW301MKM

泵油口方形法兰接头GF--LK-- Pump flange connection



材料 (Material)
碳钢, 表面镀锌钝黄GF--LK--A3C

接头编号	钢管规格 ΦRAD	尺寸参数						配用附件		最大 工作压力 kg/cm ²
		D	h	K	LK	S2	M	螺栓	O形圈	
GF30LK-L10	L10	36	8	6.5	30	30	M16x1.5	4xM6x22	17x2.5	315
GF30LK-L12	L12	36	8	6.5	30	30	M18x1.5	4xM6x22	17x2.5	315
GF35LK-L10	L10	39	8	6.5	35	30	M16x1.5	4xM6x22	20x2.5	315
GF35LK-L12	L12	39	8	6.5	35	30	M18x1.5	4xM6x22	20x2.5	315
GF35LK-L15	L15	39	8	6.5	35	30	M22x1.5	4xM6x22	20x2.5	250
GF35LK-L18	L18	39	8	6.5	35	30	M26x1.5	4xM6x22	20x2.5	250
GF40LK-L15	L15	42	8	6.5	40	35	M22x1.5	4xM6x22	26x2.5	100
GF40LK-L18	L18	42	8	6.5	40	35	M26x1.5	4xM6x22	26x2.5	100
GF40LK-L22	L22	42	8	6.5	40	35	M30x2	4xM6x22	26x2.5	100
GF40LK-L28	L28	42	8	6.5	40	42	M36x2	4xM6x22	26x2.5	100
GF35LK-S16	S16	39	8	6.5	35	30	M24x1.5	4xM6x22	20x2.5	315
GF55LK-S20	S20	55	8	8.5	55	46	M30x2	4xM8x25	32x2.5	250

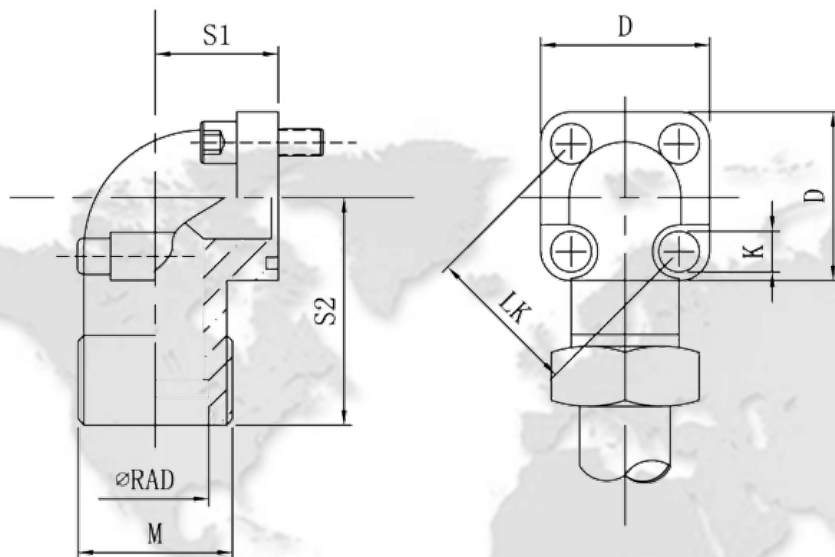
订货说明:

1.仅订接头体: GF35LK-L10

2.接头体配公制螺栓及O形圈, 加后缀M: GF35LK-L10M

3.接头体配公制螺栓及O形圈,同时配卡套及螺帽, 再加后缀KM: GF35LK-L10MKM

泵油口90°弯方形法兰接头WF--LK-- Elbow pump flange connection



材料 (Material)
碳钢, 表面镀锌钝黄GF--LK--A3C

接头编号	钢管规格 ΦRAD	尺寸参数						配件附件		最大 工作压力 kg/cm ²
		D	K	LK	S1	S2	M	螺栓	O形圈	
WF35LK-L10	L10	39	6.5	35	16.5	38	M16x1.5	M6x22/M6x35	20x2.5	315
WF35LK-L12	L12	39	6.5	35	16.5	38	M18x1.5	M6x22/M6x35	20x2.5	315
WF35LK-L15	L15	39	6.5	35	16.5	38	M22x1.5	M6x22/M6x35	20x2.5	250
WF35LK-L18	L18	39	6.5	35	20.5	38	M26x1.5	M6x22/M6x40	20x2.5	250
WF40LK-L15	L15	42	6.5	40	22.5	38	M22x1.5	M6x22/M6x40	26x2.5	100
WF40LK-L18	L18	42	6.5	40	22.5	38	M26x1.5	M6x22	26x2.5	100
WF40LK-L22	L22	42	6.5	40	22.5	38	M30x2	M6x22	26x2.5	100
WF40LK-L28	L28	42	6.5	40	28	40	M36x2	M6x22/M6x50	26x2.5	100
WF40LK-L35	L35	42	6.5	40	34	41	M45x2	M6x22/M6x60	26x2.5	100
WF35LK-L16	L16	39	6.5	35	20	38	M24x1.5	M6x22/M6x40	20x2.5	315
WF35LK-S20	S20	39	6.5	35	25	45	M30x2	M6x22/M6x45	20x2.5	315
WF40LK-S20	S20	42	6.5	40	22.5	40	M30x2	M6x22/M6x45	26x2.5	250

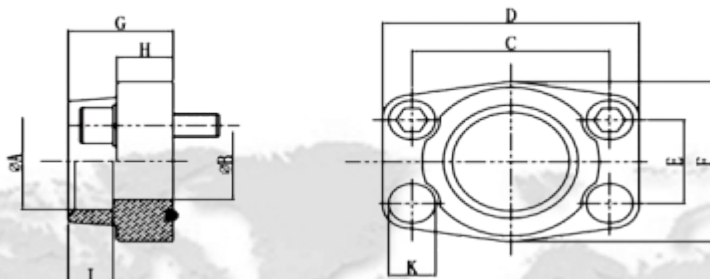
订货说明:

1. 仅订接头体: WF35LK-L10

2. 接头体配公制螺栓及O形圈, 加后缀M: WF35LK-L10M

3. 接头体配公制螺栓及O形圈, 同时配卡套及螺帽, 再加后缀KM: WF35LK-L10MKM

SAE沉插式焊接法兰AFS--S SAE socket weld flange



- 材料 (Material)
1. 20#碳钢, 表面镀锌钝黄AFS--S C20, blank oiled
 2. 不锈钢AISI 321/304 :AFS-S-X
 3. 不锈钢AISI 316 :AFS-S-X X

normal flange size	type	尺寸参数										配用螺栓规格		单重 kg	最大工作压力 kg/cm ²			
		A	B	C	D	E	F	G	H	I	K	螺栓	O形圈					
inch	轻型 3000P.S.I																	
1/2"	AFS301S	21.60	13	38.10	54	17.50	46	36	16	19	9	M8X30	18.66X3.53	0.25	345			
3/4"	AFS302S	27.20	19	47.63	65	22.26	50	36	18	19	11	M10X35	25.00X3.53	0.39	345			
3/4"	AFS302S-25	25.30	19	47.63	65	22.26	50	36	18	19	11	M10X35	25.00X3.53	0.39	345			
1"	AFS303S	34.00	25	52.37	70	26.16	55	38	18	19	11	M10X35	32.92X3.53	0.46	345			
1 1/4"	AFS304S	42.80	32	58.72	79	30.18	68	41	21	22	11.5	M10X40	37.70X3.53	0.66	276			
1 1/4"	AFS304S-38	38.30	32	58.72	79	30.18	68	41	21	22	11.5	M10X40	37.70X3.53	0.66	276			
1 1/2"	AFS305S	48.60	38	69.85	93	35.72	78	45	25	24	13.5	M12X45	47.22X3.53	1.05	207			
1 1/2"	AFS305S-50	50.50	38	69.85	93	35.72	78	45	25	24	13.5	M12X45	47.22X3.53	1.05	207			
2"	AFS306S	61.00	51	77.77	102	42.88	90	45	25	26	13.5	M12X45	56.75X3.53	1.19	207			
2 1/2"	AFS307S	76.60	63	88.90	114	50.80	105	50	25	30	13.5	M12X45	69.45X3.53	1.40	172			
3"	AFS308S	90.50	73	106.38	134	61.92	124	50	27	34	17	M16X50	85.32X3.53	2.15	138			
3 1/2"	AFS309S	103.00	89	120.65	152	69.84	136	48	27	34	17	M16X50	98.02X3.53	2.40	34			
4"	AFS310S	115.50	99	130.18	162	77.76	146	48	27	34	17	M16X50	110.72X3.53	2.85	34			
	重型 6000P.S.I																	
1/2"	AFS601S	21.60	13	40.49	54	18.24	46	36	16	19	9	M8X30	18.66X3.53	0.26	414			
3/4"	AFS602S	27.20	19	50.80	71	23.80	55	36	21	22	11	M10X35	25.00X3.53	0.50	414			
1"	AFS603S	34.00	25	57.17	81	27.78	65	42	25	22	13	M12X45	32.92X3.53	0.76	414			
1 1/4"	AFS604S	42.80	32	66.68	95	31.76	78	45	27	25	15	M14X50	37.70X3.53	1.20	414			
1 1/4"	AFS604S-38	38.30	32	66.68	95	31.76	78	45	27	25	15	M14X50	37.70X3.53	1.20	414			
1 1/2"	AFS605S	48.60	38	79.38	112	36.52	94	50	30	28	17	M16X55	47.22X3.53	1.65	414			
2"	AFS606S	61.00	51	96.82	134	44.46	114	65	37	32	21	M20X70	56.75X3.53	2.45	414			

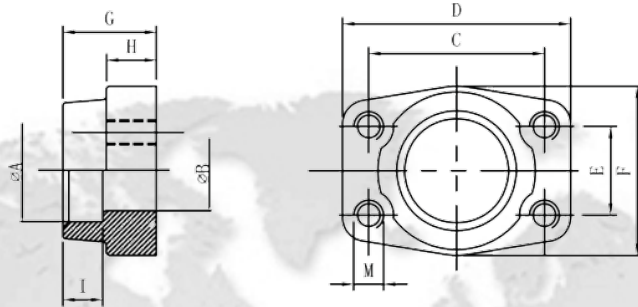
订购说明：

1. 仅订法兰：AFS301S, AFS301S-X

2. 法兰配公制螺栓及O形圈：AFS301SM, AFS301SM-X(配美制螺栓：AFS301SU, AFS301SU-X)

3. AFS与GFS配成套订购时：DFS301S, DFS301S-X

SAE沉插式焊接法兰GFS--S SAE socket weld flange



材料 (Material)

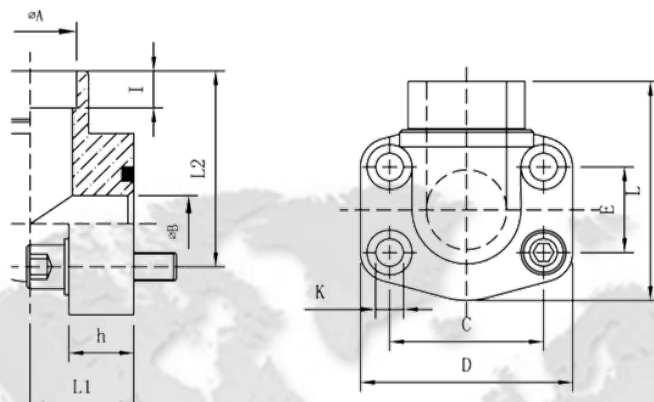
1. 20#碳钢, 表面镀锌钝黄GFS--S
C20, blank oiled
2. 不锈钢AISI 321/304 :GFS-S-X
3. 不锈钢AISI 316 : GFS-S-X X

normal flange size	type	尺寸参数										单重 kg	最大工作压力 kg/cm ²	
		A	B	C	D	E	F	G	H	I	M			
inch	轻型 3000P.S.I													
1/2"	GFS301S	21.60	13	38.10	54	17.48	46	36	16	19	M8	0.25	350	
3/4"	GFS302S	27.20	19	47.63	65	22.23	50	36	18	19	M10	0.39	350	
3/4"	GFS302S-25	25.30	19	47.63	65	22.23	50	36	18	19	M10	0.39	350	
1"	GFS303S	34.00	25	52.37	70	26.19	55	38	18	19	M10	0.49	315	
1 1/4"	GFS304S	42.80	32	58.72	79	30.18	68	41	21	22	M10	0.71	250	
1 1/4"	GFS304S-38	38.30	32	58.72	79	30.18	68	41	21	22	M10	0.71	250	
1 1/2"	GFS305S	48.60	38	69.85	93	35.71	78	45	25	24	M12	1.13	200	
2"	GFS305S-50	50.50	38	69.85	93	35.72	78	45	25	24	M12	1.30	200	
2"	GFS306S	61.00	51	77.77	102	42.88	90	45	25	26	M12	1.30	200	
2 1/2"	GFS307S	76.60	63	88.90	114	50.80	105	50	25	30	M12	1.60	160	
3"	GFS308S	90.50	73	106.38	134	61.93	124	50	27	34	M16	2.30	138	
3 7/2"	GFS309S	103.00	89	120.65	152	69.85	136	48	27	34	M16	2.50	35	
4"	GFS310S	115.50	99	130.18	162	77.77	146	48	27	34	M16	2.90	35	
	重型 6000P.S.I													
1/2"	GFS601S	21.60	13	40.49	56	18.24	48	36	16	19	M8	0.30	400	
3/4"	GFS602S	27.20	19	50.80	71	23.80	55	36	21	22	M10	0.56	400	
1"	GFS603S	34.00	25	57.15	81	27.76	65	42	25	22	M12	0.85	400	
1 1/4"	GFS604S	42.80	32	66.68	95	31.75	78	45	27	25	M14	1.21	400	
1 1/4"	GFS604S-38	38.30	32	66.68	95	31.75	78	45	27	25	M14	1.21	400	
1 1/2"	GFS605S	48.60	38	79.38	112	36.50	94	50	30	28	M16	1.90	400	
2"	GFS606S	61.00	51	96.82	134	44.45	114	65	37	32	M20	3.40	400	

订货说明：

1. 仅订法兰：GFS301S, GFS301S -X
2. AFS与GFS配成套订购时：DFS301S, DFS301S-X

SAE90°弯沉插式焊接法兰AFW—S SAE elbow socket weld flange



材料 (Material)

1. Q345B 碳钢, 表面镀锌钝黄AFW--S
blank oiled
2. 不锈钢AISI 321/304 :AFW-S-X
3. 不锈钢AISI 316 : AFW-S-X X

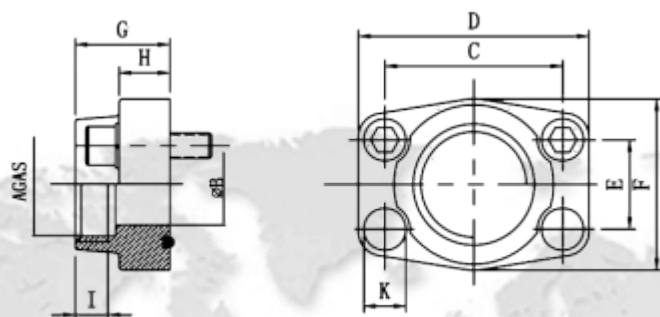
normal flange size	type	尺寸参数											配用附件		单重 kg	最大工作压力 kg/cm ²		
		A	B	C	D	E	h	I	K	L	L1	L2	螺栓	O形圈				
inch	轻型 3000P.S.I																	
1/2"	AFW301S	21.60	13	38.10	54	17.50	16	10	9	60	20	37	M8X30	18.66X3.53	0.40	345		
3/4"	AFW302S	27.20	19	47.63	65	22.26	18	10	11	63	24	38	M10X35	25.00X3.53	0.60	345		
1"	AFW303S	34.00	25	52.37	70	26.16	19	12	11	70	28	43	M10X35	32.92X3.53	0.80	345		
1 1/4"	AFW304S	42.80	32	58.72	79	30.18	21	14	11.5	85	34	51	M10X40	37.70X3.53	1.20	276		
1 1/2"	AFW305S	48.60	38	69.85	93	35.72	25	16	13.5	95	38	55	M12X45	47.22X3.53	1.65	207		
2"	AFW306S	61.00	51	77.77	102	42.88	25	18	13.5	110	42	65	M12X45	56.75X3.53	2.00	207		
	重型 6000P.S.I																	
1/2"	AFW601S	21.60	13	40.49	54	18.24	16	10	9	60	20	37	M8X30	18.66X3.53	0.50	414		
3/4"	AFW602S	27.20	19	50.80	71	23.80	19	12	11	70	28	43	M10X35	25.00X3.53	1.25	414		
1"	AFW603S	34.00	25	57.17	79	27.78	21	14	13	85	34	51	M12X40	32.92X3.53	1.50	414		
1 1/4"	AFW604S	42.80	32	66.68	93	31.76	25	16	15	95	38	56	M14X45	37.70X3.53	1.80	414		
1 1/2"	AFW605S	48.60	38	79.38	112	36.52	25	18	17	100	42	65	M16X45	47.22X3.53	2.80	414		
2"	AFW606S	61.00	51	96.82	134	44.46	29	18	21	150	60	92	M20X55	56.75X3.53	4.00	414		

订货说明:

1. 仅订法兰: AFW301S, AFW301S -X

2. 法兰配公制螺栓及O形圈: AFW301SM, AFW301SM- X(配美制螺栓: AFW301SU, AFW301SU-X)

SAE管螺纹法兰AFS--G SAE BSPP thread flange



材料 (Material)

1. Q345B碳钢, 表面防锈油AFS-G blank oiled
2. 不锈钢AISI 321/304 :AFS-G-X
3. 不锈钢AISI 316 : AFS-G-X X

normal flange size	type	尺寸参数										配用附件		单重 kg	最大工作压力 kg/cm ²		
		A	B	C	D	E	F	G	H	I	K	螺栓	O形圈				
inch	轻型 3000P.S.I																
1/2"	AFS301G	G1/2"	13	38.10	54	17.48	46	36	16	19	9	M8X30	18.66X3.53	0.25	345		
3/4"	AFS302G	G3/4"	19	47.63	65	22.23	50	36	18	19	11	M10X35	25.00X3.53	0.39	345		
1"	AFS303G	G1"	25	52.37	70	26.19	55	38	18	22	11	M10X35	32.92X3.53	0.46	345		
1 1/4"	AFS304G	G1 1/4"	32	58.72	79	30.18	68	41	21	22	11.5	M10X40	37.70X3.53	0.66	276		
1 1/2"	AFS305G	G1 1/2"	38	69.85	93	35.71	78	45	25	24	13.5	M12X45	47.22X3.53	1.05	207		
2"	AFS306G	G2"	51	77.77	102	42.88	90	45	25	26	13.5	M12X45	56.75X3.53	1.19	207		
2 1/2"	AFS307G	G2 1/2"	63	88.90	114	50.80	105	50	25	30	13.5	M12X45	69.45X3.53	1.40	172		
3"	AFS308G	G3"	73	106.38	134	61.93	124	50	27	34	17	M16X50	85.32X3.53	2.15	138		
	重型 6000P.S.I																
1/2"	AFS601G	G1/2"	13	40.49	56	18.24	48	36	16	19	9	M8X30	18.66X3.53	0.26	414		
3/4"	AFS602G	G3/4"	19	50.80	71	23.80	55	36	21	22	11	M10X35	25.00X3.53	0.50	414		
1"	AFS603G	G1"	25	57.17	81	27.76	65	42	25	22	13	M12X50	32.92X3.53	0.76	414		
1 1/4"	AFS604G	G1 1/4"	32	66.68	95	31.75	78	45	27	25	15	M14X50	37.70X3.53	1.20	414		
1 1/2"	AFS605G	G1 1/2"	38	79.38	112	36.50	94	50	30	28	17	M16X55	47.22X3.53	1.65	414		
2"	AFS606G	G2"	51	96.82	134	44.45	114	65	37	32	21	M20X70	56.75X3.53	2.45	414		

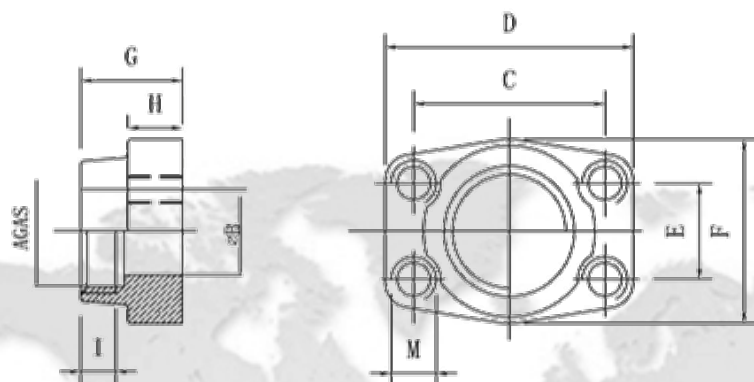
订货说明:

1. 仅订法兰: AFS301G, AFS301G -X

2. 法兰配公制螺栓及O形圈: AFS301GM, AFS301GM- X(配美制螺栓: AFS301GU, AFS301GU-X)

3. AFS与GFS配成套订购时: DFS301G, DFS301G-X

SAE管螺纹法兰GFS--G SAE BSPP thread flange



材料 (Material)

1. Q345B碳钢, 表面防锈油GFS--G
blank oiled
2. 不锈钢AISI 321/304 :GFS-G-X
3. 不锈钢AISI 316 : GFS-G-X X

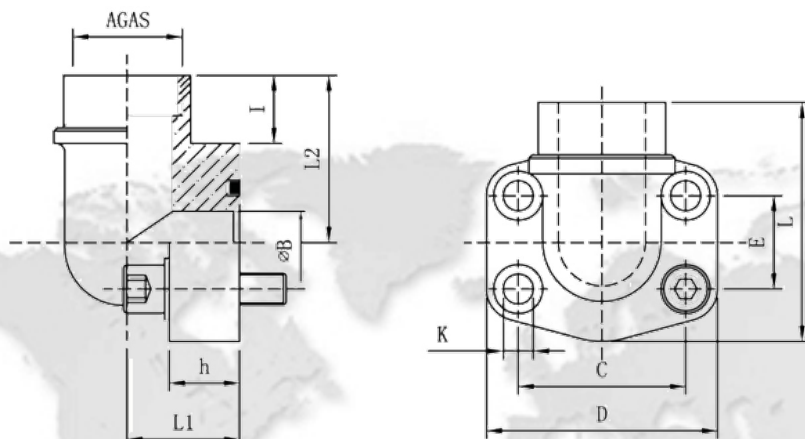
normal flange size	type	尺寸参数										单重 kg	最大工作压力 kg/cm ²	
		A	B	C	D	E	F	G	H	I	K			
inch	轻型 3000P.S.I													
1/2"	GFS301G	G1/2"	13	38.10	54	17.48	46	36	16	19	M8	0.25	345	
3/4"	GFS302G	G3/4"	19	47.63	65	22.23	50	36	18	19	M10	0.39	345	
1"	GFS303G	G1"	25	52.37	70	26.19	55	38	18	19	M10	0.49	345	
1 1/4"	GFS304G	G1 1/4"	32	58.72	79	30.18	68	41	21	22	M10	0.71	276	
1 1/2"	GFS305G	G1 1/2"	38	69.85	93	35.71	78	45	25	24	M12	1.13	207	
2"	GFS306G	G2"	51	77.77	102	42.88	90	45	25	30	M12	1.30	207	
2 1/2"	GFS307G	G2 1/2"	63	88.90	114	50.80	105	50	25	30	M12	1.60	172	
3"	GFS308G	G3"	73	106.38	134	61.93	124	50	27	34	M16	2.30	138	
	重型 6000P.S.I													
1/2"	GFS601G	G1/2"	13	40.49	56	18.24	48	36	16	19	M8	0.30	414	
3/4"	GFS602G	G3/4"	19	50.80	71	23.80	55	36	21	22	M10	0.56	414	
1"	GFS603G	G1"	25	57.15	81	27.76	65	42	25	22	M12	0.85	414	
1 1/4"	GFS604G	G1 1/4"	32	66.68	95	31.75	78	45	27	25	M14	1.21	414	
1 1/2"	GFS605G	G1 1/2"	38	79.38	112	36.50	94	50	30	28	M16	1.90	414	
2"	GFS606G	G2"	51	96.82	134	44.45	114	65	37	32	M20	3.40	414	

订货说明 :

1. 仅订法兰 : GFS301G, GFS301G -X

2. AFS与GFS配成套订购时 : DFS301G, DFS301G-X

SAE90°管螺纹法兰AFW--G SAE elbow BSPP thread flange



材料 (Material)

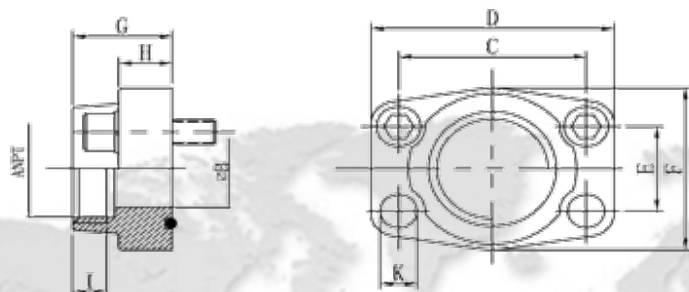
1. Q345B碳钢, 表面防锈油AFW--N
blank oiled
2. 不锈钢AISI 321/304 :AFW-N-X
3. 不锈钢AISI 316 : AFW-N-XX

normal flange size	type	尺寸参数											配件附件		单重 kg	最大工作压力 kg/cm ²		
		A	B	C	D	E	H	I	K	L	L1	L2	螺栓	O型圈				
inch	轻型 3000P.S.I																	
1/2"	AFW301N	NPT1/2"	13	38.10	54	17.50	16	19	9	60	20	37	M8 30	18.66 3.53	0.40	345		
3/4"	AFW302N	NPT3/4"	19	47.63	65	22.26	18	19	11	63	24	38	M10 35	25.00 3.53	0.60	345		
1"	AFW303N	NPT1"	25	52.37	70	26.16	19	20	11	70	28	43	M10 35	32.92 3.53	0.80	345		
1 1/4"	AFW304N	NPT1 1/4"	32	58.72	79	30.18	21	22	11	85	34	51	M10 40	37.70 3.53	1.20	276		
1 1/2"	AFW305N	NPT1 1/2"	38	69.85	93	35.72	25	25	13.5	95	38	56	M12 45	47.22 3.53	1.65	207		
2"	AFW306N	NPT2"	51	77.77	102	42.88	25	28	13.5	110	42	65	M12 45	56.75 3.53	2.00	207		
	重型 6000P.S.I																	
1/2"	AFW601N	NPT1/2"	13	40.49	54	18.24	16	19	9	60	20	27	M8 30	18.66 3.53	0.50	414		
3/4"	AFW602N	NPT3/4"	19	50.80	70	23.80	19	19	11	70	28	43	M10 35	25.00 3.53	1.25	414		
1"	AFW603N	NPT1"	25	57.17	79	27.78	21	20	13	85	34	51	M12 40	32.92 3.53	1.50	414		
1 1/4"	AFW604N	NPT1 1/4"	32	66.68	93	31.76	25	22	15	95	38	56	M14 45	37.70 3.53	1.80	414		
1 1/2"	AFW605N	NPT1 1/2"	38	79.38	110	36.52	25	25	17	100	42	65	M16 45	47.22 3.53	2.80	414		
2"	GFS606N	NPT2"	51	96.82	134	44.46	29	28	21	150	60	92	M20 55	56.75 3.53	4.00	414		

订货说明:

1. 仅订法兰: AFW301N, AFW301N -X
2. 法兰配定制螺栓及O型圈: AFW301NM, AFW301NM-X(配美制螺栓: AFW301NU, AFW301NU-X)

SAE美制锥管螺纹 (NPT) 法兰AFS--N SAE NPT thread flange



材料 (Material)

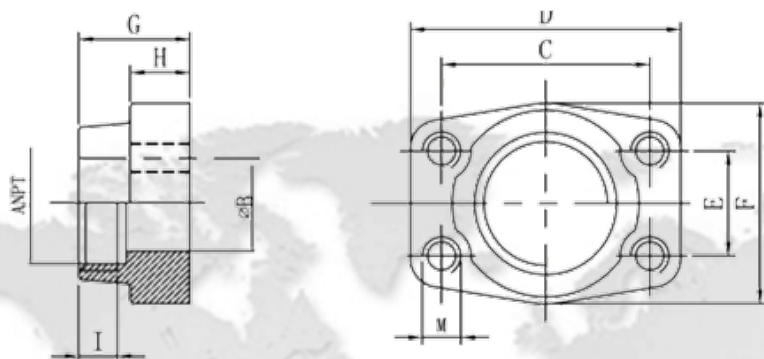
1. Q345B碳钢, 表面防锈油AFS--N blank oiled
2. 不锈钢AISI 321/304 :AFS-N-X
3. 不锈钢AISI 316 :AFS-N-X X

normal flange size	type	尺寸参数										配用附件		单重 kg	最大工作压力 kg/cm ²		
		A	B	C	D	E	F	G	H	I	K	螺栓	O形圈				
inch	轻型 3000P.S.I																
1/2"	AFS301N	NPT1/2"	13	38.10	54	17.50	46	36	16	19	9	M8X30	18.66X3.53	0.25	345		
3/4"	AFS302N	NPT3/4"	19	47.63	65	22.26	50	36	18	19	11	M10X35	25.00X3.53	0.39	345		
1"	AFS303N	NPT1"	25	52.37	70	26.16	55	38	18	19	11	M10X35	32.92X3.53	0.46	345		
1 1/4"	AFS304N	NPT1 1/4"	32	58.72	79	30.18	68	41	21	22	11.5	M10X40	37.70X3.53	0.66	276		
1 1/2"	AFS305N	NPT1 1/2"	38	69.85	93	35.72	78	45	25	24	13.5	M12X45	47.22X3.53	1.05	207		
2"	AFS306N	NPT2"	51	77.77	102	42.88	90	45	25	26	13.5	M12X45	56.75X3.53	1.19	207		
2 1/2"	AFS307N	NPT2 1/2"	63	88.90	114	50.80	105	50	25	30	13.5	M12X45	69.45X3.53	1.40	172		
3"	AFS308N	NPT3"	73	106.38	134	61.92	124	50	27	34	17	M16X50	85.32X3.53	2.15	138		
	重型 6000P.S.I																
1/2"	AFS601N	NPT1/2"	13	40.49	54	18.24	46	36	16	19	9	M8X30	18.66X3.53	0.26	414		
3/4"	AFS602N	NPT3/4"	19	50.80	71	23.80	55	36	21	22	11	M10X35	25.00X3.53	0.50	414		
1"	AFS603N	NPT1"	25	57.17	81	27.78	65	42	25	22	13	M12X45	32.92X3.53	0.76	414		
1 1/4"	AFS604N	NPT1 1/4"	32	66.68	95	31.78	78	45	27	25	15	M14X50	37.70X3.53	1.20	414		
1 1/2"	AFS605N	NPT1 1/2"	38	79.38	112	36.52	94	50	30	28	17	M16X55	47.22X3.53	1.65	414		
2"	AFS606N	NPT2"	51	96.82	134	44.46	114	65	37	32	21	M20X70	56.75X3.53	2.45	414		

订货说明 :

1. 仅订法兰 : AFS301N
2. 法兰配公制螺栓及O形圈: AFS301NM, AFS301NM- X(配美制螺栓 : AFS301NU, AFS301NU-X)
3. AFS与GFS配成套订购时 : DFS301N, DFS301N-X

SAE美制锥管螺纹 (NPT) 法兰GFS--N SAE NPT thread flange



材料 (Material)

1. Q345B碳钢, 表面防锈油GFS--N blank oiled
2. 不锈钢AISI 321/304 :GFS-N-X
3. 不锈钢AISI 316 : GFS-N-XX

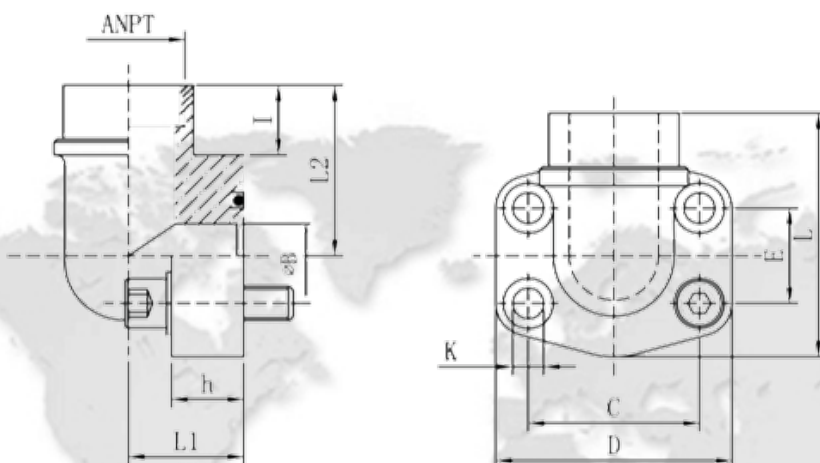
normal flange size	type	尺寸参数										单重 kg	最大工作压力 kg/cm ²	
		A	B	C	D	E	F	G	H	I	M			
inch	轻型 3000P.S.I													
1/2"	GFS301N	NPT1/2"	13	38.10	54	17.48	46	36	16	19	M8	0.25	345	
3/4"	GFS302N	NPT3/4"	19	47.63	65	22.23	50	36	18	19	M10	0.39	345	
1"	GFS303N	NPT1"	25	52.37	70	26.19	55	38	18	22	M10	0.49	345	
1 1/4"	GFS304N	NPT1 1/4"	32	58.72	79	30.18	68	41	21	22	M10	0.71	276	
1 1/2"	GFS305N	NPT1 1/2"	38	69.85	93	35.71	78	45	25	24	M12	1.13	207	
2"	GFS306N	NPT2"	51	77.77	102	42.88	90	45	25	26	M12	1.30	207	
2 1/2"	GFS307N	NPT2 1/2"	63	88.90	114	50.80	105	50	25	30	M12	1.60	172	
3"	GFS308N	NPT3"	73	106.38	134	61.93	124	50	27	34	M16	2.30	138	
	重型 6000P.S.I													
1/2"	GFS601N	NPT1/2"	13	40.49	54	18.24	48	36	16	19	M8	0.30	414	
3/4"	GFS602N	NPT3/4"	19	50.80	71	23.80	55	36	21	22	M10	0.56	414	
1"	GFS603N	NPT1"	25	57.15	81	27.76	65	42	25	22	M12	0.85	414	
1 1/4"	GFS604N	NPT1 1/4"	32	66.68	95	31.75	78	45	27	25	M14	1.21	414	
1 1/2"	GFS605N	NPT1 1/2"	38	79.38	112	36.50	94	50	30	28	M16	1.90	414	
2"	GFS606N	NPT2"	51	96.82	134	44.45	114	65	37	32	M20	3.40	414	

订货说明：

1. 仅订法兰：GFS301N, GFS301N -X
2. AFS与GFS配成套订购时：DFS301N, DFS301N-X

SAE90°美制锥管螺纹 (NPT) 法兰AFW-- N

SAE elbow NPT thread flange



材料 (Material)

1. Q345B碳钢, 表面防锈油AFW--N blank oiled
2. 不锈钢AISI 321/304 :AFW-N-X
3. 不锈钢AISI 316 : AFW-N-XX

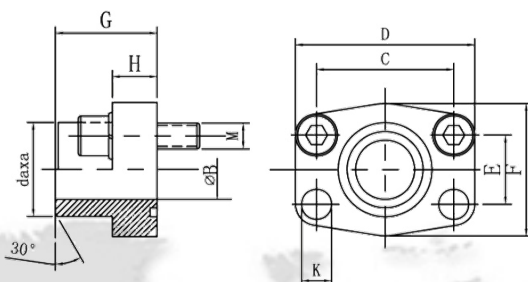
normal flange size	type	尺寸参数											配用附件		单重 kg	最大工作压力 Kg/cm ²			
		A	B	C	D	E	H	I	K	L	L1	L2	螺栓	O型圈					
inch	轻型 3000P.S.I																		
1/2"	AFW301N	NPT1/2"	13	38.10	54	17.50	16	19	9	60	20	37	M8×30	18.66×3.53	0.40	345			
3/4"	AFW302N	NPT3/4"	19	47.63	65	22.26	18	19	11	63	24	38	M10×35	25.00×3.53	0.60	345			
1"	AFW303N	NPT1"	25	52.37	70	26.16	19	20	11	70	28	43	M10×35	32.92×3.53	0.80	345			
1 1/4"	AFW304N	NPT1 1/4"	32	58.72	79	30.18	21	22	11	85	34	51	M10×40	37.70×3.53	1.20	276			
1 1/2"	AFW305N	NPT1 1/2"	38	69.85	93	35.72	25	25	13.5	95	38	56	M12×45	47.22×3.53	1.65	207			
2"	AFW306N	NPT2"	51	77.77	102	42.88	25	28	13.5	110	42	65	M12×45	56.75×3.53	2.00	207			
	重型 6000P.S.I																		
1/2"	AFW601N	NPT1/2"	13	40.49	54	18.24	16	19	9	60	20	27	M8×30	18.66×3.53	0.50	414			
3/4"	AFW602N	NPT3/4"	19	50.80	70	23.80	19	19	11	70	28	43	M10×35	25.00×3.53	1.25	414			
1"	AFW603N	NPT1"	25	57.17	79	27.78	21	20	13	85	34	51	M12×40	32.92×3.53	1.50	414			
1 1/4"	AFW604N	NPT1 1/4"	32	66.68	93	31.76	25	22	15	95	38	56	M14×45	37.70×3.53	1.80	414			
1 1/2"	AFW605N	NPT1 1/2"	38	79.38	110	36.52	25	25	17	100	42	65	M16×45	47.22×3.53	2.80	414			
2"	GFS606N	NPT2"	51	96.82	134	44.46	29	28	21	150	60	92	M20×55	56.75×3.53	4.00	414			

订货说明：

1. 仅订法兰：AFW301N, AFW301N -X

2. 法兰配公制螺栓及O型圈：AFW301NM, AFW301NM-X 配美制螺栓：AFW301NU, AFW301NU-X)

SAE对焊焊接法兰AFS--T SAE weld on flange



da x a

为法兰的对焊部位尺寸（外径x壁厚），在通常情况下做成30°焊接坡口。样本所列为我公司常备规格，也可根据用户要求订制。

材料 (Material)

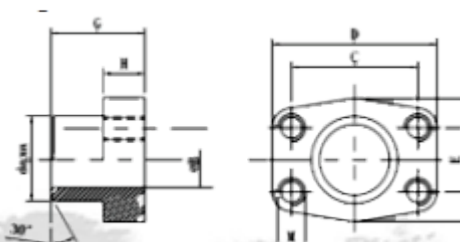
1. Q345B碳钢，表面防锈油AFS--T blank oiled
2. 不锈钢AISI 321/304 : AFS-T-X
3. 不锈钢AISI 316 : AFS-T-XX

normal flange size	type	尺寸参数									配用附件		单重 kg	最大工作压力 kg/cm ²
		DAXA	C	D	E	F	G	h	K	螺栓	O形圈			
轻型 3000P.S.I														
1/2"	AFS301T	16x2.5 21.6x4.3 20x3	38.10	54	17.50	46	36	16	9	M8x30	18.66x3.53	0.28	345	
3/4"	AFS302T	25X3 26.9X3.6 28X4.5	47.63	65	22.26	50	36	18	11	M10x35	25.00x3.53	0.39	345	
1"	AFS303T	38X4 33.7X3.6 34X4.5 35X4	52.37	70	26.16	55	38	18	11	M10x35	32.92x3.53	0.46	345	
1 1/4"	AFS304T	38X4 42.4X3.6 42.8X5.5	58.72	79	30.18	68	41	21	11.5	M10x40	37.70x3.53	0.66	276	
1 1/2"	AFS305T	42.4X4 48.6X5.5 48.3X4	69.85	93	35.72	78	45	25	13.5	M12 x45	47.22x3.53	1.05	207	
2"	AFS306T	60.3X4 61X5.5	77.77	102	42.88	90	45	25	13.5	M12x45	56.75x3.53	1.09	207	
2 1/2"	AFS307T	76.1X4 77X7.1	88.90	114	50.80	105	50	25	13.5	M12x45	69.45x3.53	1.40	172	
3"	AFS308T	76.1X4 76.1X7.1 89X4 92X9	106.38	135	61.92	124	50	27	17	M16x50	85.32x3.53	2.15	138	
3 1/2"	AFS309T	89X4 103X7	120.65	152	69.85	136	48	27	17	M16x50	98.02x3.53	2.40	34	
4"	AFS310T	114.3X4 115.5X8	130.18	162	77.76	146	48	27	17	M16x50	110.72x3.53	2.85	34	
重型 6000P.S.I														
1/2"	AFS601T	16X2.5 20X3 21.6X4.3	40.49	54	18.24	46	36	16	9	M8x30	18.66x3.53	0.35	414	
3/4"	AFS602T	20X3 25X4 21.6X4.3	50.80	71	23.80	55	36	21	11	M10x35	25.00x3.53	0.65	414	
1"	AFS603T	25X4 30X5 33.7X7.1 34X4.5	57.17	81	27.78	65	42	25	13	M12x45	32.92x3.53	1.05	414	
1 1/4"	AFS604T	30X5 38X6 42.4X8.8 42.8X5.5	66.68	95	31.76	78	45	27	15	M14x50	37.70x3.53	1.53	414	
1 1/2"	AFS605T	48.3X8.8 48.6X5.5 60.3X10	79.38	112	36.52	94	50	30	17	M16x55	47.22x3.53	2.50	414	
2"	AFS606T	60.3X10 61X9 76.1X12.5	96.82	134	44.46	114	65	37	21	M20x70	56.75x3.53	4.20	414	

订货说明：

1. 仅订法兰：AFS301T-20x3, AFS301T-20x3 -X
2. 法兰配制螺栓及O形圈：AFS301TM-20x3, AFS301TM-20x3-X(配美制螺栓：AFS301TU-20x3)
3. AFS与GFS配成套订购时：DFS301T-20x3 /16x2.5 (两头焊接尺寸不一致时)

SAE对焊焊接法兰GFS--T SAE weld on flange



材料 (Material)

1. Q345B 碳钢, 表面防锈油GFS--T blank oiled
2. 不锈钢AISI 321/304 :GFS-T-X
3. 不锈钢AISI 316 : GFS-T-XX

da x a

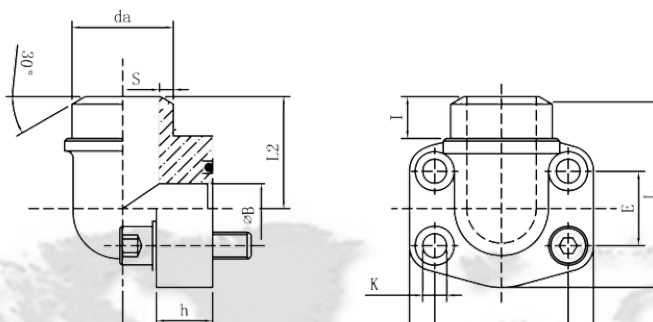
为法兰的对焊部位尺寸 (外径x壁厚), 在通常情况下做成30°焊接坡口。样本所列为我公司常备规格, 也可根据用户要求订制。

normal flange size	type	尺寸参数									单重 kg	最大工作压力 kg/cm ²
		DAXA	C	D	E	F	G	H	M			
轻型 3000P.S.I												
1/2"	GFS301T	16x2.5 20x3	21.6x4.3	38.10	54	17.50	46	36	16	M8	0.28	345
3/4"	GFS302T	25x3 26.9x3.6	28x4.5	47.63	65	22.26	50	36	18	M10	0.39	345
1"	GFS303T	30x4 34x4.5	33.7x3.6 35x4	52.37	70	26.16	55	38	18	M10	0.46	345
1 1/4"	GFS304T	38x4 42.4x3.6	42.8x5.5	58.72	79	30.18	68	41	21	M10	0.66	276
1 1/2"	GFS305T	42.4x4 48.3x4	48.6x5.5	69.85	93	35.72	8	45	25	M12	1.05	207
2"	GFS306T	60.3x4 61x5.5		77.77	102	42.88	90	45	25	M12	1.09	207
2 1/2"	GFS307T	76.1x4 77x7.1		88.90	114	50.80	105	50	25	M12	1.40	172
3"	GFS308T	76.1x4 89x4	76.1x7.1 92x9	106.38	135	61.92	124	50	27	M12	2.15	138
3 1/2"	GFS309T	89x4 103x7		120.65	152	69.85	136	48	27	M16	2.40	34
4"	GFS310T	114.3x4 115.5x8		130.18	162	77.76	146	48	27	M16	2.85	34
重型 6000P.S.I												
1/2"	GFS601T	16x2.5 21.6x4.3	20x3	40.49	54	18.24	46	36	16	M8	0.35	414
3/4"	GFS602T	20x3 26.9x3.6	25x4 28x4.5	50.80	71	23.80	55	36	21	M10	0.65	414
1"	GFS603T	25x4 33.7x7.1	30x5 34x4.5	57.17	81	27.78	65	42	25	M12	1.05	414
1 1/4"	GFS604T	30x5 42.4x8.8	38x6 42.8x5.5	66.68	95	31.76	78	45	27	M14	1.53	414
1 1/2"	GFS605T	48.3x8.8 60.3x10	48.6x5.5	79.38	112	36.52	94	50	30	M16	2.50	414
2"	GFS606T	60.3x10 61x5.5	61x9 76.1x12.5	96.82	134	44.46	114	65	37	M20	4.20	414

订货说明:

1. 仅订法兰: GFS301T(20x3), GFS301T-X(20x3)
2. AFS与GFS配成套订购时: DFS301T-20x3 /16x2.5 (两头焊接尺寸不一致时)

SAE直角焊接法兰AFW--T SAE elbow weld on flange



da x a
为法兰的对焊部位尺寸（外径x壁厚），在通常情况下做成30°
焊接坡口。样本所列为我公式常备规格，也可根据用户要求定制。

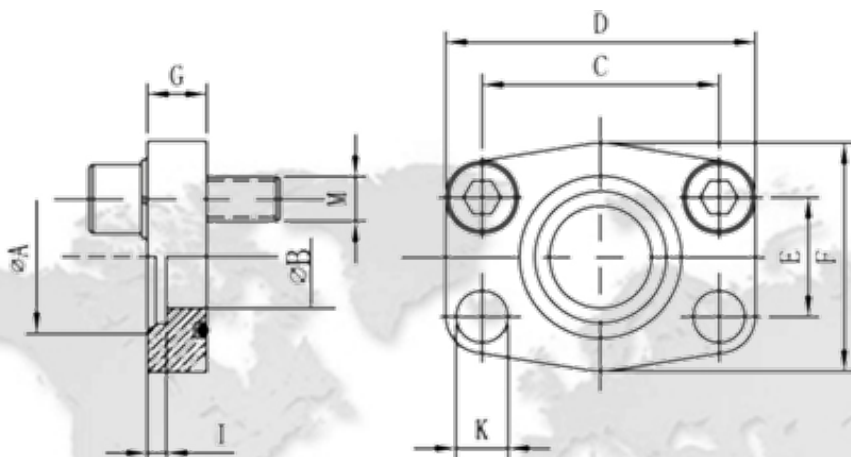
- 材料 (Material)
1. Q345B碳钢，表面防锈油AFW--T
C20, blank oiled
 2. 不锈钢AISI 321/304 :AFW-T-X
 3. 不锈钢AISI 316 : AFW-T-X X

normal flange size	type	尺寸参数											配件附件		单重 kg	最大工作压力 kg/cm ²
		B	C	D	E	h	l	K	L	L1	L2	螺栓	O型圈			
轻型 3000P.S.I																
1/2"	AFW301T	20×3 22×4	13	38.10	54	17.50	16	10	9	60	20	37	M8×30	18.66×3.53	0.40	345
3/4"	AFW302T	25×3 28×4	19	47.63	65	22.26	18	10	11	63	24	38	M10×35	25.00×3.53	0.60	345
1"	AFW303T	30×4 35×4	25	52.37	70	26.16	19	12	11	70	28	43	M10×35	32.92×3.53	0.80	345
1 1/4"	AFW304T	38×4 42.4×4	32	58.72	79	30.18	21	14	11	85	34	51	M10×40	37.70×3.53	1.20	276
1 1/2"	AFW305T	42.4×4 48.3×4.5	38	69.85	93	35.72	25	16	13.5	95	38	56	M12×45	47.22×3.53	1.65	207
2"	AFW306T	60.3×5.6	51	77.77	102	42.88	25	18	13.5	110	42	65	M12×45	56.75×3.53	2.00	207
重型 6000P.S.I																
1/2"	AFW601T	20×3 22×4	13	40.49	54	18.24	16	10	9	60	20	37	M8×30	18.66×3.53	0.50	414
3/4"	AFW602T	25×4 28×4.5	19	50.80	70	23.80	19	12	11	70	28	46	M10×35	25.00×3.53	1.25	414
1"	AFW603T	30×4 35×5	25	57.17	79	27.78	21	14	13	85	34	51	M12×40	32.92×3.53	1.50	414
1 1/4"	AFW604T	38×5 42.4×6	32	66.68	93	31.76	25	16	15	95	38	56	M14×45	37.70×3.53	1.80	414
1 1/2"	AFW605T	48.3×8	38	79.38	110	36.52	25	18	17	110	42	65	M16×45	47.22×3.53	2.80	414
2"	AFW606T	60.3×10	51	96.82	134	44.46	29	18	21	150	60	92	M20×55	56.75×3.53	4.00	414

订货说明：

1. 仅订法兰：AFW301T(20x3), AFW301T(20x3)
2. 法兰配公制螺栓及O型圈：AFW301TM(20x3), AFW301TM-X(20x3)(配美制螺栓：AFW301TU-20x3)

SAE低压焊接平法兰AFC--S SAE socket weld flange 500 P.S.I.



材料 (Material)
Q345B 碳钢, 表面防锈油
blank oiled

normal flange size	type	尺寸参数										配用附件		单重 kg	最大工作压力 kg/cm ²		
		Rohr	A	B	C	D	E	F	G	I	K	螺栓	O形圈				
inch	轻型 3000P.S.I																
1/2"	AFC301S	22x2	22.60	15	38.10	54	17.48	46	10	3	9	M8x25	18.66x3.53	0.12	40		
3/4"	AFC302S	28x2	27.20	20	47.63	65	22.23	50	12	4	11	M10X30	25.00X3.53	0.20	40		
1"	AFC303S	35X2	34.00	29	52.37	70	26.19	55	12	4	11	M10X30	32.92X3.53	0.25	40		
1 1/4"	AFC304S	42X2	42.80	34	58.72	79	30.18	68	12	4	11	M10X30	37.70X3.53	0.31	40		
1 1/2"	AFC305S	48.3X4	48.60	42	69.85	93	35.71	78	15	4	13.5	M12X35	47.22X3.53	0.50	40		
2"	AFC306S	60.3X4	61.00	53	77.77	102	42.88	90	15	4	13.5	M12X35	56.75X3.53	0.59	40		
2 1/2"	AFC307S	76.1X3.6	76.60	64	88.90	114	50.80	105	15	4	13.5	M12X35	69.45X3.53	0.72	40		
3"	AFC308S	88.9X4	90.50	80	106.38	134	61.93	124	20	5	17	M16X40	85.32X3.53	1.25	40		
3 1/2"	AFC309S	101.6X4.5	103.00	93	120.65	152	69.85	136	20	5	17	M16X40	98.02X3.53	1.50	40		
4"	AFC310S	114.3X1.5	115.50	105	130.18	162	77.77	146	25	6	17	M16X45	110.72X3.53	2.15	40		
5"	AFC311S	139.7X5	141.00	126	152.40	190	92.08	170	28	8	17	M16X45	136.12X3.53	3.00	40		

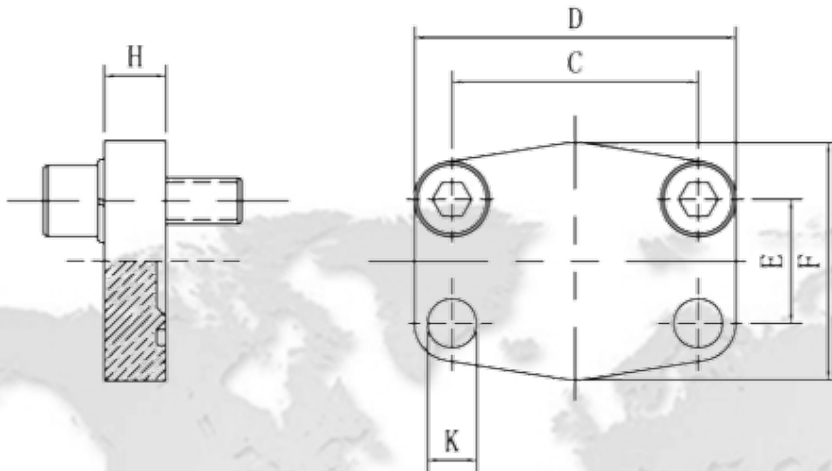
订货说明：

1.仅订法兰：AFC301S

2.法兰配公制螺栓及O形圈: AFC301SM, AFC301SM-X (配美制螺栓：AFC301SU)

3.AFC-S与GFC-S配成套订购时：DFC301S

SAE法兰盖AFC-- SAE closed flange



材料 (Material)

1. 45#碳钢, 表面镀锌钝黄AFC--C45 A3C
2. 不锈钢AISI 321/304 : AFC-X
3. 不锈钢AISI 316 : AFC-XX

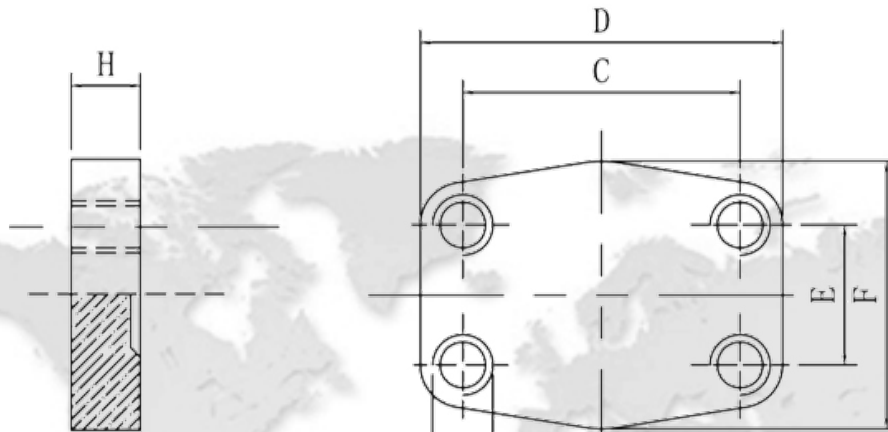
normal flange size	type	尺寸参数						配用附件		单重 kg	最大工作压力 kg/cm ²
		C	D	E	F	h	K	螺栓	O形圈		
inch	轻型 3000P.S.I										
1/2"	AFC301	38.10	54	17.48	46	16	9	M8X30	18.66X3.53	0.24	350
3/4"	AFC302	47.63	65	22.23	50	16	11	M10X35	25.00X3.53	0.30	350
1"	AFC303	52.37	70	26.19	60	18	11	M10X35	32.92X3.53	0.45	315
1 1/4"	AFC304	58.72	79	30.18	68	19	11.5	M10X40	37.70X3.53	0.60	250
1 1/2"	AFC305	69.85	93	35.71	78	20	13.5	M12X45	47.22X3.53	0.83	200
2"	AFC306	77.77	102	42.88	90	20	13.5	M12X45	56.75X3.53	1.16	200
2 1/2"	AFC307	88.90	114	50.80	105	20	13.5	M12X45	69.45X3.53	1.40	160
3"	AFC308	106.38	134	61.93	124	24	17	M16X50	85.32X3.53	2.35	138
	重型 6000P.S.I										
1/2"	AFC601	40.49	56	18.24	48	16	9	M8X30	18.66X3.53	0.25	400
3/4"	AFC602	50.80	71	23.80	60	19	11	M10X35	25.00X3.53	0.48	400
1"	AFC603	57.15	81	27.76	70	24	13	M12X45	32.92X3.53	0.77	400
1 1/4"	AFC604	66.68	95	31.75	78	27	15	M14X45	37.70X3.53	1.13	400
1 1/2"	AFC605	79.38	112	36.50	94	30	17	M16X50	47.22X3.53	1.80	400
2"	AFC606	96.82	134	44.45	114	28	21	M20X65	56.75X3.53	2.40	400

订货说明:

1. 仅订法兰盖: AFC301

2. 法兰配公制螺栓及O形圈: AFC301M (配美制螺栓: AFC301U)

SAE螺纹孔法兰盖GFC-- SAE closed flange



材料 (Material)

1. 45#碳钢, 表面镀锌钝黄GFC--C45 A3C
2. 不锈钢AISI 321/304 : GFC-X
3. 不锈钢AISI 316 : GFC-XX

normal flange size	type	尺寸参数						单重 kg	最大工作压力 kg/cm ²
		C	D	E	F	h	M		
inch	轻型 3000P.S.I								
1/2"	GFC301	38.10	54	17.48	46	16	M8	0.24	350
3/4"	GFC302	47.63	65	22.23	50	16	M10	0.30	350
1"	GFC303	52.37	70	26.19	60	19	M10	0.45	315
1 1/4"	GFC304	58.72	79	30.18	68	18	M10	0.60	250
1 1/2"	GFC305	69.85	93	35.71	78	20	M12	0.83	200
2"	GFC306	77.77	102	42.88	90	20	M12	1.16	200
2 1/2"	GFC307	88.90	114	50.80	105	20	M12	1.40	160
3"	GFC308	106.38	134	61.93	124	24	M16	2.35	138
	重型 6000P.S.I								
1/2"	GFC601	40.49	56	18.24	48	16	M8	0.25	400
3/4"	GFC602	50.80	71	23.80	60	19	M10	0.48	400
1"	GFC603	57.15	81	27.76	70	24	M12	0.77	400
1 1/4"	GFC604	66.68	95	31.75	78	27	M14	1.13	400
1 1/2"	GFC605	79.38	112	36.50	94	30	M16	1.80	400
2"	GFC606	96.82	134	44.45	114	28	M20	2.40	400

订货说明：

1. 仅订法兰盖：GFC301

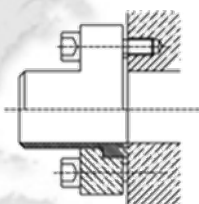
ISO6164方形法兰系列 FA/FK

材料说明：

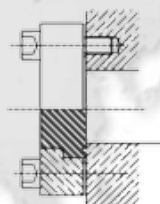
ISO6164方法兰系列有碳钢和不锈钢材料可选择，用型号加后缀来区分：

- 1.全碳钢件时：不加后缀或加-ST
- 2.法兰件用碳钢，焊管用不锈钢AISI304/321时：加后缀-ST/X 焊管用不锈钢AISI316时：加后缀-ST/XX
- 3.法兰、焊管都为不锈钢时：用AISI304/321，加后缀-X;用AISI316,加后缀-XX

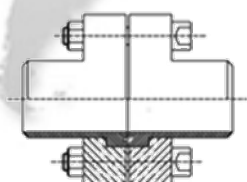
FA—
方形法兰一只
带O槽焊管一只
O形圈一只 螺
栓一组



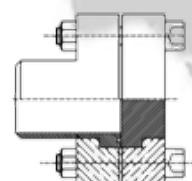
FAG—
方形法兰一只
带O槽焊管一只
O形圈一只 螺
栓一组



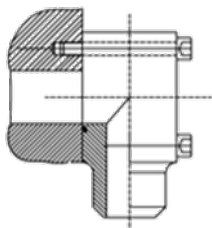
FK—
方形法兰两只
配对焊管一对
O形圈一只 螺
栓一组



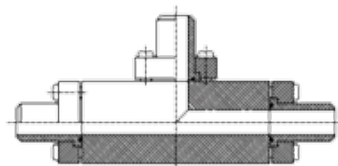
FKG—
方形法兰两只
带O槽焊管一只
光面闷盖一只
O形圈一只 螺
栓一组



WFA—
90°弯法兰一只
O形圈一只 螺
栓一组

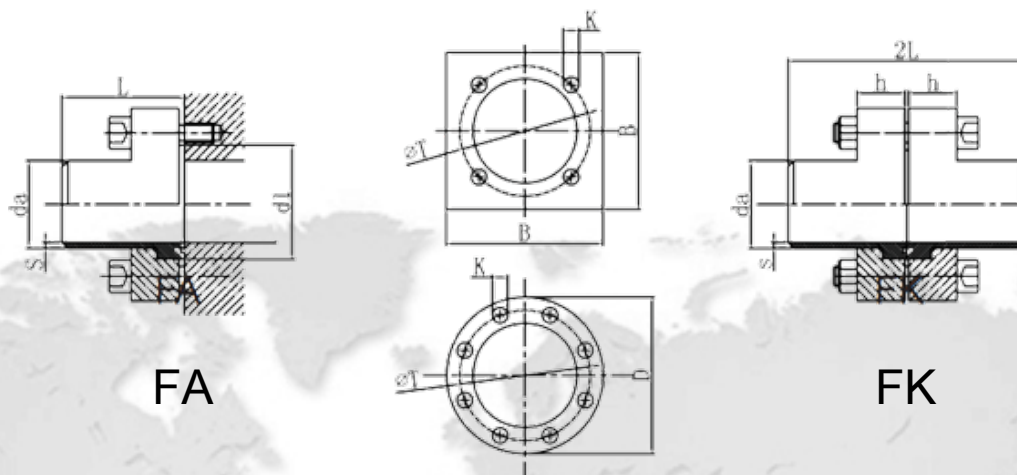


FV—
三通法兰
全套订货时：
三通块一只
FA—3套



特别提示：为保证正常的安装及使用，请勿将我公司该系列法兰及焊接管与其他公司产品混合配装。

ISO6164方形法兰系列 (PN10-64/series O)



da x a 为焊管的对焊部位尺寸 (外径x壁厚) , 在通常情况下做成30°
焊接坡口。样本所列为我公司常备规格, 也可根据用户要求订制。

编号 type	尺寸参数								配用附件		单重 kg
	daxa	B	D	h	T	d1	K	L	螺栓	O型圈	
FA 32-0 FK	42.4X2.6 42.4X3 42.4X3.6	80	-	24	72	55	13	64	M12x40 M12x70	37.70x3.53	1.4 2.65
FA 40-0 FK	42.4x3 48.3x2.6 48.3x3 48.3x3.6	90	-	29	80	60	17	68	M16x55 M16x80	42.50x3.55	2.0 4.00
FA 50-0 FK	60.3x2.9 60.3x4.5 60.3x4 60.3x3.6	100	-	38	98	76	17	80	M16x65 M16x100	58.00x3.55	3.1 6.00
FA 65-0 FK	76.1x2.9 76.1x3.6 76.1x4	120	-	48	118	92	21	98	M20x75 M20x120	75.00x3.55	5.50 10.60
FA 80-0 FK	89x6 89x8 89x4	150	-	48	145	110	25	109	M24x80 M24x130	79.60x5.7	9.50 18
FA 90-0 FK	101.6x7.1	180	-	58	175	135	32	135	M30x95 M30x150	89.60x5.7	17 33
FA 100-0 FK	114.3x4 114.3x6 114.3x7.1	180	-	58	175	135	32	135	M30x95 M30x150	109.60x5.7	17 33
FA 125-0 FK	140x8.5 139.7x8 139.7x10	-	245	68	200	168	25	150	M24x100 M24x170	114.60x5.7 129.6x5.7	29 57
FA 150-0 FK	168.3x6 169.3x8 168x10	-	300	80	245	205	32	190	M30x100 M30x200	164.47x6.99	48.5 95.5

Exampe(订购示例) 碳钢制:

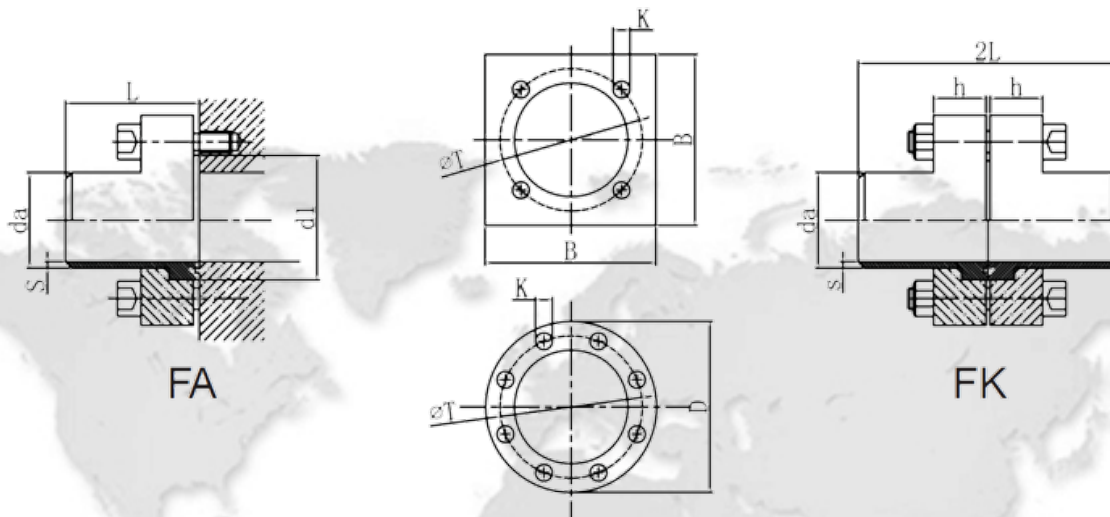
FA 50-0,FK 50-0,FAG50-0,FKG50-0

碳钢法兰, 不锈钢接管 (AISI 321/304)

FA 50-0-ST/X,FKG 50-0-ST/X

全不锈钢制 (AISI 321/304) FA 50-0-X,FAG 50-0-X

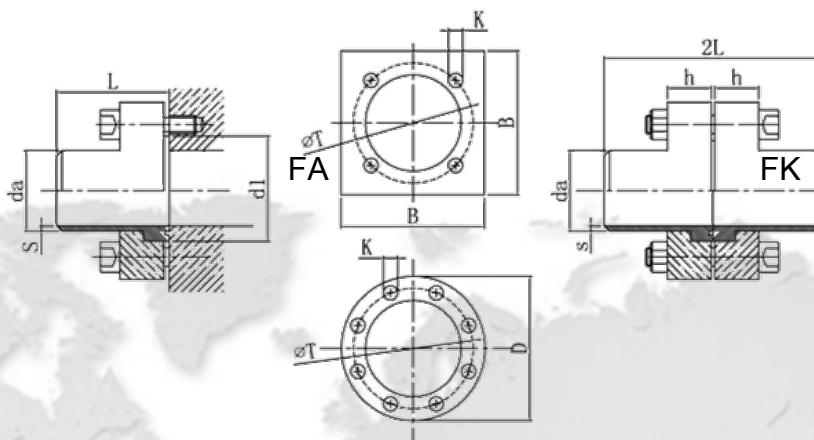
ISO6164方形法兰系列 (PN10-64/series 2)



da x a 为焊管的对焊部位尺寸（外径x壁厚），在通常情况下做成30°焊接坡口。样本所列为我公司常备规格，也可根据用户要求订制。

编号 type	尺寸参数								配用附件		单重 kg
	daxa	B	D	h	T	d1	K	L	螺栓	O型圈	
FA FK 12-2	16x2 16X2.6	50	-	19	44	28	11	43	M10x35 M10x55	15.54X2.65 16.00X2.65	0.43 0.83
FA FK 16-2	20x2.5	60	-	19	54	38	11	50	M10x35 M10X55	23.47X2.62 25.00X2.65	0.62 1.20
FA FK 20-2	25x3 27.2X3	60	-	19	54	38	11	50	M10x35 M10X55	23.47X2.62 25.00X2.65	0.62 1.20
FA FK 25-2	28X4 30X3 30X4 34X3	70	-	19	64	46	13	56	M12x40 M12x55	29.82X2.62 30.00X2.65	0.90 1.75
FA FK 32-2	34X538X5 42.4X5	80	-	24	72	55	13	64	M12x45 M12X70	37.70x3.53	1.40 2.65
FA FK 40-2	42.4X5 48.3x6 48.3X5 48.3x4	90	-	29	80	60	17	68	M16x55 M16x80	42.50x3.55 42.50X3.53	2.10 4.00
FA FK 50-2	48.3X5 48.3x6 50x6 62x6 60.3x5 60.3x6.3	100	-	38	98	76	17	80	M16x65 M16x100	53.34x5.33 53.30X5.33	3.10 6.00
FA FK 65-2	76.1X6.3 76.1X7.1 76.1X8	120	-	48	118	92	21	98	M20x75 M20x120	69.22x5.33 61.50X5.33	5.50 10.60
FA FK 80-2	101.6X8.8 101.6X10 108X12	180	-	58	175	135	32	109	M30x95 M30x150	89.60x5.7 88.60X5.7	17 33
FA FK 100-2	114.3x10 114.3X12.5	180	-	58	175	135	32	135	M30x95 M30x150	104.60x5.7 103.60X5.7	17 33
FA FK 125-2	139.7X12.5 140X16 152.4X12.5 152.4X16	-	245	68	20	168	25	150	M24x100 M24x170	114.60X5.7 128.60x5.7 129.60X5.7	29 57
FA FK 150-2	177.8x17.5	-	300	80	245	205	32	190	M30x120 M30x200	160.00x7 164.47X6.99	48.50 95.50

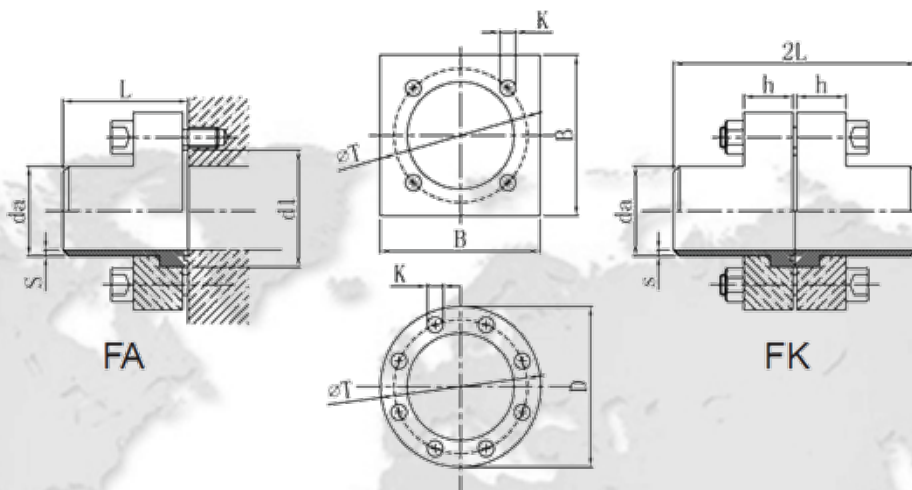
ISO6164方形法兰系列 (PN250/series 3)



da x a 为焊管的对焊部位尺寸 (外径x壁厚) , 在通常情况下做成30°
焊接坡口。样本所列为我公司常备规格, 也可根据用户要求订制。

编号 type	尺寸参数								配用附件		单重 kg
	daxa	B	D	h	T	d1	K	L	螺栓	O形圈	
FA FK 10-3	16X3 18X3	50	-	19	44	28	11	43	M10x35 M10x55	16.00x2.65 15.54X2.62	0.43 0.83
FA FK 12-3	20X3	60	-	19	54	38	11	50	M10x35 M10x55	25.00x2.65 23.47X2.62	0.62 1.20
FA FK 16-3	21.3X2.6 21.3X3.62 22X4 25X4	60	-	19	54	38	11	50	M10x35 M10x55	25.00x2.65 23.47X2.62	0.62 1.20
FA FK 20-3	27.2X4 26.9X3.6 25X4 30X5 34X4.5	70	-	19	64	46	13	56	M12x40 M12x55	30.00x2.65 29.82X2.62	0.90 1.75
FA FK 25-3	33.7X4.5 42.4x5.6	80	-	24	72	55	13	64	M12x45 M12x70	37.70x3.53	1.40 2.65
FA FK 32-3	42.4X5.6 42.4x6.3	90	-	29	80	60	17	68	M16x55 M16x80	42.50x3.53 42.50X3.55	2.10 4.00
FA FK 40-3	60.3X8 60.3X7.1	100	-	38	98	76	17	80	M16x65 M16x100	53.30x5.33 53.34X5.33	3.10 6.00
FA FK 50-3	76.1x10	120	-	48	118	92	21	98	M20x75 M20x120	61.50x5.33 62.97X5.33	5.50 10.60
FA FK 65-3	89X10 88.9X11 76.1X10	150	-	48	145	110	25	109	M24x80 M24x130	78.60x5.7 79.60X5.7	9.50 18
FA FK 80-3	101.6X12.5 89X11 114.3X14.2 101.6X14.2 115X15	180	-	59	175	135	32	135	M30x95 M30x150	88.60x5.7 89.60X5.7	17 33
FA FK 100-3	139.7x17.5 133.7X20 139.7x20	-	245	69	200	168	25	150	M24x100 M24x170	113.60x5.7 114.60X5.7	29 57
FA FK 125-3	168.3x20 168.3x22	-	300	80	245	205	32	190	M30x120 M30x200	145.00x7 148.59X6.99	48.50 95.50
FA FK 150-3	193.7x25	-	355	90	290	245	38	200	M36x140 M36x220	145.00x7 170.00X7	58 112.0

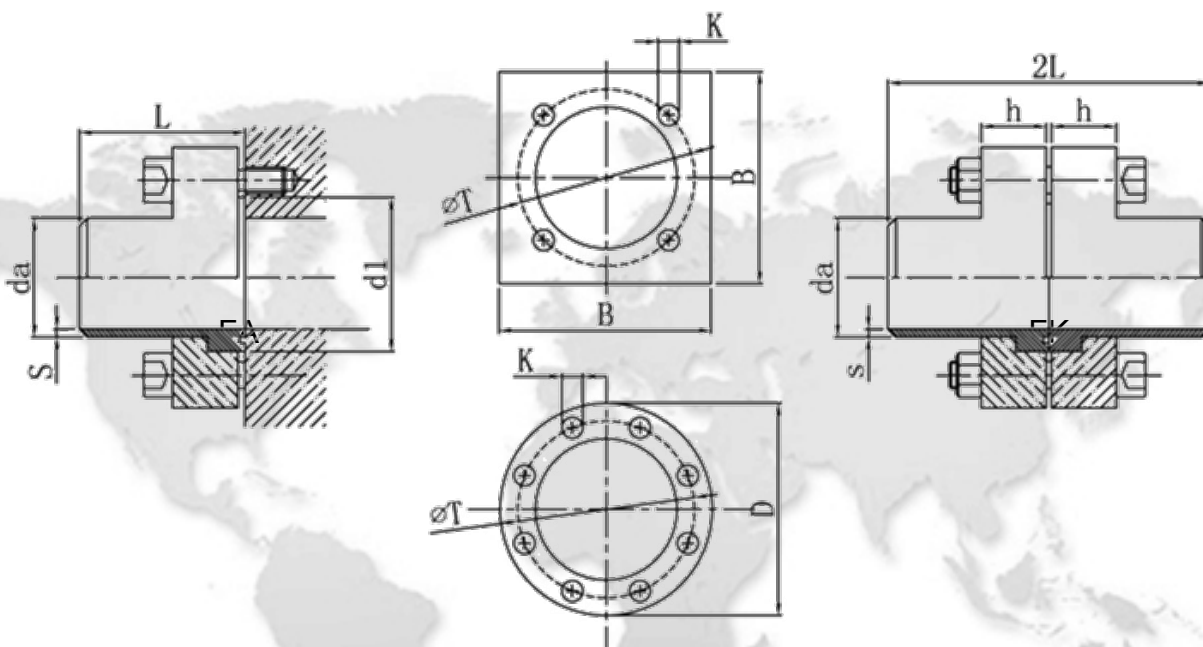
ISO6164-1方形法兰系列 (PN320/series 4)



da x a 为焊管的对焊部位尺寸 (外径x壁厚) , 在通常情况下做成30°
焊接坡口。样本所列为我公司常备规格, 也可根据用户要求订制。

编号 type	尺寸参数								配用附件		单重 kg
	daxa	B	D	h	T	d1	K	L	螺栓	O型圈	
FA FK 10-4	17.2x3.6	50	-	19	44	28	11	43	M10x35 M10x55	16.00x2.65 15.54x2.62	0.43 0.83
FA FK 12-4	21.3x4.2 22x4.2 21.3x3.6 21.3x7.5	60	-	19	54	38	11	50	M10x35 M10x55	25.00x2.65 23.47x2.62	0.62 1.20
FA FK 16-4	26.9x4.5 26.9x5.8	60	-	19	54	38	11	50	M10x35 M10x55	25.00x2.65 23.47x2.62	0.62 1.20
FA FK 20-4	42.4x7.1 42.1x8	70	-	19	64	46	13	56	M12x40 M12x55	30.00x2.65 29.82x2.62	0.90 1.75
FA FK 25-4	42.4x7.1	80	-	24	72	55	13	64	M12x45 M12x70	37.70x3.53	1.40 2.65
FA FK 32-4	48.3x8	90	-	29	80	60	17	68	M16x55 M16x80	42.50x3.53 42.50x3.55	2.10 4.00
FA FK 40-4	60.3x10 60.3x12.5	100	-	38	98	76	17	80	M16x65 M16x100	53.30x5.33 53.34x5.33	3.10 6.00
FA FK 50-4	76.1x12.5	120	-	48	118	92	21	98	M20x75 M20x120	61.50x5.33 62.87x5.33	5.50 10.60
FA FK 65-4	88.9x14.2 76.1x12.5	150	-	48	145	110	25	109	M24x80 M24x130	78.60x5.7 79.6x5.7	9.50 18
FA FK 70-4	101.6x16	180	-	59	175	135	32	135	M30x90 M30x150	88.60x5.7	17 33
FA FK 80-4	114.3x17.5 114.3x20	180	-	59	175	135	32	135	M30x95 M30x150	88.60x5.7	17 33
FA FK 100-4	139.7x22.2 133.7x20 152.4x28	-	245	69	200	168	25	150	M24x100 M24x110	113.60x5.7 114.60x5.7	29 57
FA FK 125-4	177.8x30	-	300	80	245	205	32	190	M30x120 M30x200	145.00x7 148.59x6.99	48.50 95.50
FA FK 150-4	193.7x30 219.1x38 193.7x32 219.1x36	-	355	90	290	245	38	200	M36x140 M36x220	164.47x6.99 170.00x7	58 112.00

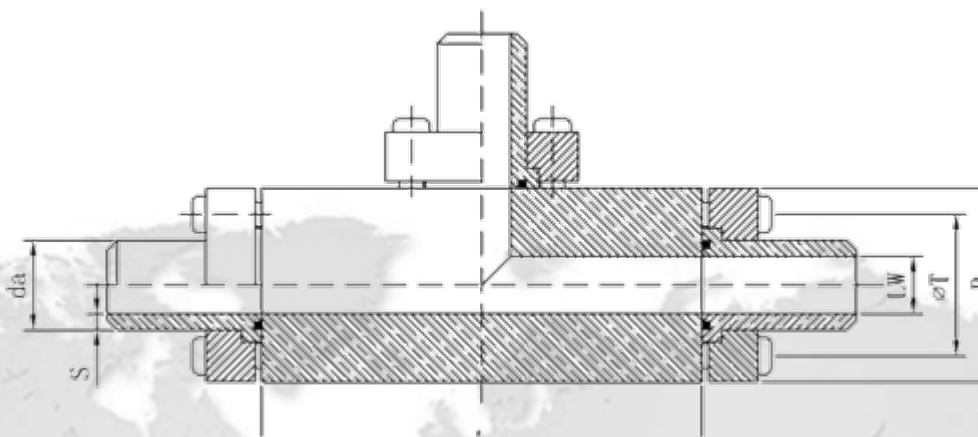
ISO6164方形法兰系列 (PN400/series 5)



da x a 为焊管的对焊部位尺寸 (外径x壁厚) , 在通常情况下做成30°
焊接坡口。样本所列为我公司常备规格, 也可根据用户要求订制。

编号 type	尺寸参数									配用附件		单重 kg
	daxa	B	D	h	T	d1	K	L	螺栓	O形圈		
FA FK 32-5	48.3x8.8 48.3X8	100	-	38	98	76	17	80	M16x65 M16x100	53.30x5.33 53.34X5.33	3.10 6.00	
FA FK 40-5	60.3x11	120	-	48	118	92	21	98	M20x75 M20x120	61.50x5.33 62.87X5.33	5.50 10.60	
FA FK 50-5	76.1x14.2	150	-	48	145	110	25	109	M24x80 M24x130	78.60x5.7 79.60X5.7	9.50 18	
FA FK 65-5	101.6x20	180	-	59	175	135	32	135	M30x95 M30x150	88.60x5.7 89.60X5.7	17 33	
FA FK 80-5	133x25 133.7X25	-	245	69	200	168	25	150	M24x100 M24x170	113.60x5.7 114.60X5.7	29 57	
FA FK 100-5	150.4x30	-	300	80	245	205	32	190	M30x120 M30x200	145.00x7 149.59X6.99	48.5 59.5	
FA FK 125-5	219.1x45	-	390	90	315	273	38	200	M36x140 M36x220	145.00x7 180.00X7	68 128	

ISO6164方形法兰三通 FV--



da x a 为焊管的对焊部位尺寸（外径x壁厚），在通常情况下做成30°焊接坡口。样本所列为我公司常备规格，也可根据用户要求订制。

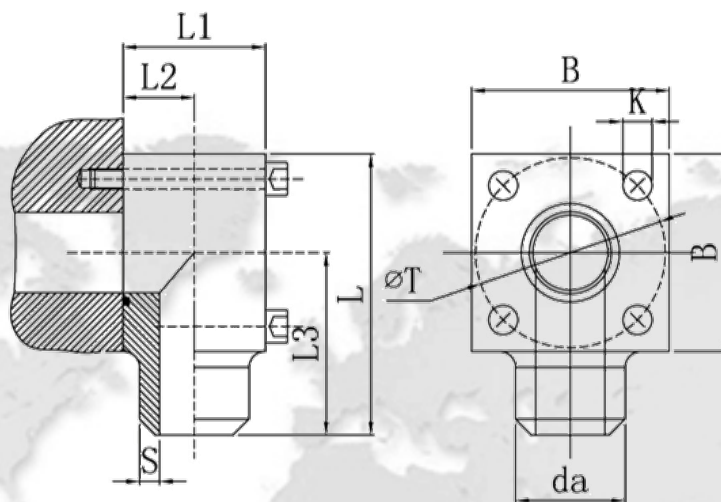
材料 (Material)
1.碳钢
2.不锈钢

编 号 type	尺寸参数				三通块重量 KG
	daxa	B	ΦT	L	
FV 10-3 FV 10-4	16X2.6 17.2X3.6	50	44	97	1.6
FV 12-3 FV 12-4	20X2.9 20X4	60	54	106	2.6
FV 16-3 FV 16-4	21.3X2.6 26.9X4.5	60	54	106	2.6
FV 20-3 FV 20-4	26.9X3.6 33.7X5.6	70	64	115	3.9
FV 25-3 FV 25-4	33.7X4.5 42.4X7.1	80	72	123	5.4
FV 32-3 FV 32-4	42.4X5.6 48.3X8	90	80	140	7.3
FV 40-3 FV 40-4	60.3X8 60.3X10	100	98	160	10
FV 50-3 FV 50-4	76.1X10 76.1X12.5	120	118	180	16
FV 65-3 FV 65-4	88.9X11 88.9X14.2	150	145	200	27
FV 80-3 FV 80-4	101.6X14.2 114.3X17.5	180	175	260	49

订货说明：

FV三通产品成套订购，法兰、焊管、螺栓及O形圈配齐。

ISO616490°弯法兰系列 WFA--



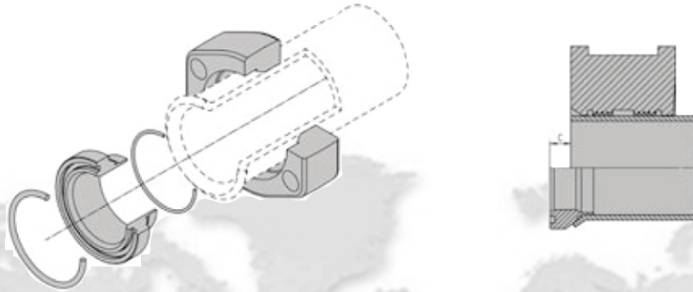
da x a 为焊管的对焊部位尺寸（外径x壁厚），在通常情况下做成30°焊接坡口。样本所列为我公司常备规格，也可根据用户要求订制。

编号 type	尺寸参数								配用附件		
	daxa	L1	L2	L3	L	B	T	K	螺栓	O形圈	
WFA 10	-3 -4	16X3 17.2X4	29	16.5	55	80	50	44	11	M10x45	16.00x2.65
WFA 12	-3 -4	20X3 20X4	32	18.0	65	95	60	54	11	M10x50	25.00x2.65
WFA 16	-3 -4	21.3X3 26.9X4.5	41	23	65	95	60	54	11	M10x60	25.00x2.65
WFA 20	-3 -4	26.9X4 33.7X5.6	47	26	75	110	70	64	13	M12x65	32.92x3.53
WFA 25	-3 -4	33.7X4.5 42.4X7.1	56	30	90	130	80	72	13	M12x75	37.70x3.53
WFA 32	-3 -4	42.4X5.6 48.3X8	64	34	92	140	90	80	17	M16x85	42.50x3.53
WFA 40	-3 -4	60.3X8 60.3X10	76	40	105	155	100	98	17	M16x100	53.30x5.33
WFA 50	-3 -4	76.1X10 76.1X12.5	100	53	115	175	120	118	21	M20x130	61.50x5.33
WFA 65	-3 -4	88.9X11 88.9X14.2	115	58	155	230	150	145	21	M20x140	78.60x5.7
WFA 80	-3 -4	101.6X12.5 114.3X17.5	140	72	150	270	180	175	32	M30x175	88.60x5.7

订货说明：

WFA产品成套订购，螺栓及O形圈配齐。

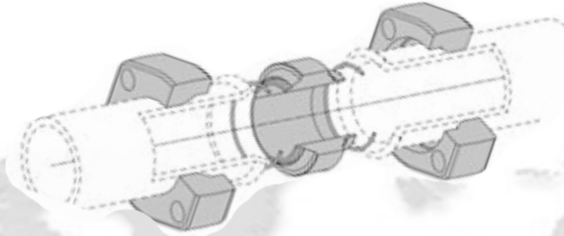
扩口法兰 SAE 3000PSI SAE J 518 Code 61



扩口法兰 (1/2"-3")

规格	管子尺寸	产品型号	产品代码	C	D	重量	锥体型号	O型圈尺寸		衬套型号
1/2"	16×2.0	308/16×2.0FA	14015000	10	19.7	0.22	08/16×2.0FA	OR18.64×3.53	OR12×1.0	08/16F
1/2"	18×2.0	308/18×2.0FA	14015010	11	21.9	0.21	08/18×2.0FA	OR18.64×3.53	OR14×1.0	08/18F
1/2"	20×2.2	308/20×2.0FA	14015020	9	24	0.22	08/20×2.0FA	OR18.64×3.53	OR20×1.0	08/20F
1/2"	25×2.5	308/25×2.5FA	14015030	9	29	0.22	08/25×2.5FA	OR18.64×3.53	OR20×1.0	None
1/2"	25×3.0	308/25×3.0FA	14015035	9	29	0.22	08/25×3.0FA	OR18.64×3.53	OR20×1.0	None
3/4"	20×2.0	312/20×2.0FA	14015050	12	24	0.36	12/20×2.0FA	OR24.99×3.53	OR20×1.0	12/20F
3/4"	20×2.5	312/20×2.5FA	14015054	12	24	0.31	12/20×2.5FA	OR24.99×3.53	OR15×1.0	12/20F
3/4"	25×2.5	312/25×2.5FA	14015061	9	29	0.34	12/25×2.5FA	OR24.99×3.53	OR20×1.0	12/25F
3/4"	25×3.0	312/25×3.0FA	14015066	10	29	0.34	12/25×3.0FA	OR24.99×3.53	OR20×1.0	12/25F
3/4"	30×3.0	312/30×3.0FA	14015075	9	36.5	0.31	12/30×3.0FA	OR24.99×3.53	OR23×1.0	None
1"	25×2.5	316/25×2.5FA	14015090	9	29	0.46	16/25×2.5FA	OR32.92×3.53	OR20×1.0	16/25F
1"	25×3.0	316/25×3.0FA	14015095	9	29	0.46	16/25×3.0FA	OR32.92×3.53	OR20×1.0	16/25F
1"	30×3.0	316/30×3.0FA	14015100	7	36.5	0.43	16/30×3.0FA	OR32.92×3.53	OR23×1.0	16/30F
1"	30×4.0	316/30×4.0FA	14015105	7	36.5	0.43	16/30×4.0FA	OR32.92×3.53	OR22×1.0	16/30F
1"	38×4.0	316/38×4.0FA	14015110	10	43.5	0.37	16/38×4.0FA	OR32.92×3.53	OR30×1.0	None
1 1/4"	30×3.0	320/30×3.0FA	14015020	10	36.5	0.61	20/30×3.0FA	OR37.69×3.53	OR23×1.0	20/30F
1 1/4"	30×4.0	320/30×4.0FA	1401512302	10	36.5	0.50	20/30×4.0FA	OR37.69×3.53	OR22×1.0	20/30F
1 1/4"	38×4.0	320/38×4.0FA	14015125	9	43.5	0.56	20/38×4.0FA	OR37.69×3.53	OR30×1.0	20/38F
1 1/4"	38×5.0	320/38×5.0FA	14015130	9	43.5	0.53	20/38×5.0FA	OR37.69×3.53	OR28×1.0	20/38F
1 1/4"	42×4.0	320/42×4.0FA	14015135	11	48	0.51	20/42×4.0FA	OR37.69×3.53	OR34×1.0	None
1 1/2"	30×3.0	324/30×3.0FA	14015141	14	36.5	0.91	24/30×3.0FA	OR47.22×3.53	OR23×1.0	24/30F
1 1/2"	38×4.0	324/38×4.0FA	14015145	13	43.5	1.02	24/38×4.0FA	OR47.22×3.53	OR30×1.0	24/38F
1 1/2"	42×4.0	324/42×4.0FA	14015150	13	48	0.97	24/42×4.0FA	OR47.22×3.53	OR34×1.0	24/42F
1 1/2"	50×5.0	324/50×5.0FA	14015160	11	58	0.86	24/50×5.0FA	OR47.22×3.53	OR41×1.78	None
2"	50×5.0	332/50×5.0FA	14015170	11	58	1.41	32/50×5.0FA	OR56.75×3.53	OR41×1.78	32/50F
2"	60×5.0	332/60×5.0FA	14015161	11	68	1.23	32/60×5.0FA	OR56.75×3.53	OR50.52×1.78	None
2"	60×6.0	332/60×6.0FA	14015165	11	68	1.23	32/60×6.0FA	OR56.75×3.53	OR47.37×1.78	None
2 1/2"	60×5.0	340/60×5.0FA	14015178	12	68	2.11	40/60×5.0FA	OR69.44×3.53	OR50.52×1.78	40/60F
2 1/2"	72×7.0	340/72×7.0FA	1401517922	12		1.90	40/72×7.0FA	OR69.44×3.53	OR56.87×1.78	None
2 1/2"	75×5.0	340/75×5.0FA	14015180	13	82.8	1.95	40/75×5.0FA	OR69.44×3.53	OR63.22×1.78	None
3"	75×5.0	348/75×5.0FA	14015191	16	82.8	3.57	48/75×5.0FA	OR85.32×3.53	OR63.22×1.78	48/75F
3"	90×5.0	348/90×5.0FA	14015198	14	100.3	3.07	48/90×5.0FA	OR85.32×3.53	OR79×1.78	None

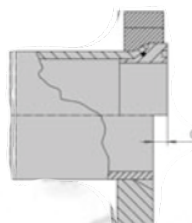
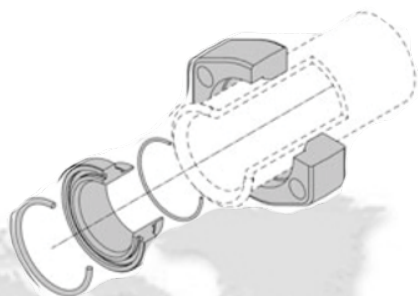
扩口法兰 SAE 3000PSI SAE J 518 Code 61



扩口法兰 (1/2"-3")

规格	管子尺寸	产品型号	产品代码	C	D	重量	椎体型号	O型圈尺寸	衬套型号
1/2"	16×2.0	308/16×2.0FB	14015001	10	19.7	0.22	08/16×2.0FB	OR12×1.0	08/16F
1/2"	18×2.0	308/18×2.0FB	14015011	11	21.9	0.21	08/18×2.0FB	OR14×1.0	08/18F
1/2"	20×2.2	308/20×2.0FB	14015021	9	24	0.22	08/20×2.0FB	OR20×1.0	08/20F
1/2"	25×2.5	308/25×2.5FB	14015031	9	29	0.22	08/25×2.5FB	OR20×1.0	None
1/2"	25×3.0	308/25×3.0FB	14015036	9	29	0.22	08/25×3.0FB	OR20×1.0	None
3/4"	20×2.0	312/20×2.0FB	14015051	12	24	0.36	12/20×2.0FB	OR20×1.0	12/20F
3/4"	20×2.5	312/20×2.5FB	14015055	12	24	0.31	12/20×2.5FB	OR15×1.0	12/20F
3/4"	25×2.5	312/25×2.5FB	14015062	9	29	0.34	12/25×2.5FB	OR20×1.0	12/25F
3/4"	25×3.0	312/25×3.0FB	14015067	10	29	0.34	12/25×3.0FB	OR20×1.0	12/25F
3/4"	30×3.0	312/30×3.0FB	14015076	9	36.5	0.31	12/30×3.0FB	OR23×1.0	None
1"	25×2.5	316/25×2.5FB	14015091	9	29	0.46	16/25×2.5FB	OR20×1.0	16/25F
1"	25×3.0	316/25×3.0FB	14015096	9	29	0.46	16/25×3.0FB	OR20×1.0	16/25F
1"	30×3.0	316/30×3.0FB	14015101	7	36.5	0.43	16/30×3.0FB	OR23×1.0	16/30F
1"	30×4.0	316/30×4.0FB	14015106	7	36.5	0.43	16/30×4.0FB	OR22×1.0	16/30F
1"	38×4.0	316/38×4.0FB	14015111	10	43.5	0.37	16/38×4.0FB	OR30×1.0	None
1 1/4"	30×3.0	320/30×3.0FB	14015121	10	36.5	0.61	20/30×3.0FB	OR23×1.0	20/30F
1 1/4"	30×4.0	320/30×4.0FB	1401512304	10	36.5	0.50	20/30×4.0FB	OR22×1.0	20/30F
1 1/4"	38×4.0	320/38×4.0FB	14015126	9	43.5	0.56	20/38×4.0FB	OR30×1.0	20/38F
1 1/4"	38×5.0	320/38×5.0FB	14015131	9	43.5	0.53	20/38×5.0FB	OR28×1.0	20/38F
1 1/4"	42×4.0	320/42×4.0FB	14015136	11	48	0.51	20/42×4.0FB	OR34×1.0	None
1 1/2"	30×3.0	324/30×3.0FB	14015142	14	36.5	0.91	24/30×3.0FB	OR23×1.0	24/30F
1 1/2"	38×4.0	324/38×4.0FB	14015146	13	43.5	1.02	24/38×4.0FB	OR30×1.0	20/38F
1 1/2"	42×4.0	324/42×4.0FB	14015151	13	48	0.97	24/42×4.0FB	OR34×1.0	24/42F
1 1/2"	50×5.0	324/50×5.0B	140151601	11	58	0.86	24/50×5.0FB	OR41×1.78	None
2"	50×5.0	332/50×5.0FB	140151570	11	58	1.41	32/50×5.0FB	OR41×1.78	32/50F
2"	60×5.0	332/60×5.0FB	140151611	11	68	1.23	32/60×5.0FB	OR50.52×1.78	None
2"	60×6.0	332/60×6.0FB	14015166	11	68	1.23	32/60×6.0FB	OR47.37×1.78	None
2 1/2"	60×5.0	340/60×5.0FB	140151781	12	68	2.11	40/60×5.0FB	OR50.52×1.78	40/60F
2 1/2"	72×7.0	340/72×7.0FB	1401517924	12	—	1.90	40/72×7.0FB	OR56.87×1.78	None
2 1/2"	75×5.0	340/75×5.0FB	14015181	13	82.8	1.95	40/75×5.0FB	OR63.22×1.78	None
3"	75×5.0	348/75×5.0FB	14015192	16	82.8	3.57	48/75×5.0FB	OR63.22×1.78	48/75F
3"	90×5.0	348/90×5.0FB	14015199	14	100.3	3.07	48/90×5.0FB	OR79×1.78	None

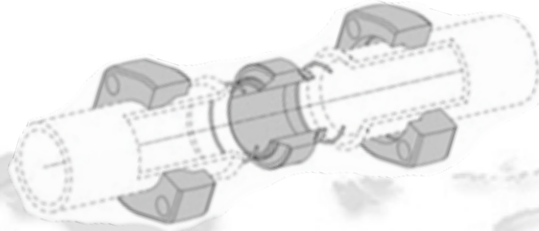
扩口法兰 SAE 3000PSI SAE J 518 Code 61



扩口法兰 (1/2"-3")

规格	管子尺寸	产品型号	产品代码	C	D	重量	椎体型号	O型圈尺寸	衬套型号
1/2"	16×2.0	308/16×2.0FC	14015002	10	19.7	0.22	08/16×2.0FC	OR12×1.0	08/16F
1/2"	18×2.0	308/18×2.0FC	14015012	11	21.9	0.21	08/18×2.0FC	OR14×1.0	08/18F
1/2"	20×2.2	308/20×2.0FC	14015022	9	24	0.22	08/20×2.0FC	OR20×1.0	08/20F
1/2"	25×2.5	308/25×2.5FC	14015032	9	29	0.22	08/25×2.5FC	OR20×1.0	None
1/2"	25×3.0	308/25×3.0FC	14015037	9	29	0.22	08/25×3.0FC	OR20×1.0	None
3/4"	20×2.0	312/20×2.0FC	14015052	12	24	0.36	12/20×2.0FC	OR20×1.0	12/20F
3/4"	20×2.5	312/20×2.5FC	14015057	12	24	0.31	12/20×2.5FC	OR15×1.0	12/20F
3/4"	25×2.5	312/25×2.5FC	14015063	9	29	0.34	12/25×2.5FC	OR20×1.0	12/25F
3/4"	25×3.0	312/25×3.0FC	14015068	10	29	0.34	12/25×3.0FC	OR20×1.0	12/25F
3/4"	30×3.0	312/30×3.0FC	14015077	9	36.5	0.31	12/30×3.0FC	OR23×1.0	None
1"	25×2.5	316/25×2.5FC	14015092	9	29	0.46	16/25×2.5FC	OR20×1.0	16/25F
1"	25×3.0	316/25×3.0FC	14015097	9	29	0.46	16/25×3.0FC	OR20×1.0	16/25F
1"	30×3.0	316/30×3.0FC	14015102	7	36.5	0.43	16/30×3.0FC	OR23×1.0	16/30F
1"	30×4.0	316/30×4.0FC	14015107	7	36.5	0.43	16/30×4.0FC	OR22×1.0	16/30F
1"	38×4.0	316/38×4.0FC	14015112	10	43.5	0.37	16/38×4.0FC	OR30×1.0	None
1 1/4"	30×3.0	320/30×3.0FC	14015122	10	36.5	0.61	20/30×3.0FC	OR23×1.0	20/30F
1 1/4"	30×4.0	320/30×4.0FC	1401512306	10	36.5	0.50	20/30×4.0FC	OR22×1.0	20/30F
1 1/4"	38×4.0	320/38×4.0FC	14015127	9	43.5	0.56	20/38×4.0FC	OR30×1.0	20/38F
1 1/4"	38×5.0	320/38×5.0FC	14015132	9	43.5	0.53	20/38×5.0FC	OR28×1.0	20/38F
1 1/4"	42×4.0	320/42×4.0FC	14015137	11	48	0.51	20/42×4.0FC	OR34×1.0	None
1 1/2"	30×3.0	324/30×3.0FC	14015143	14	36.5	0.91	24/30×3.0FC	OR23×1.0	24/30F
1 1/2"	38×4.0	324/38×4.0FC	14015147	13	43.5	1.02	24/38×4.0FC	OR30×1.0	24/38F
1 1/2"	42×4.0	324/42×4.0FC	14015152	13	48	0.97	24/42×4.0FC	OR34×1.0	24/42F
1 1/2"	50×5.0	324/50×5.0FC	140151602	11	58	0.86	24/50×5.0FC	OR41×1.78	None
2"	50×5.0	332/50×5.0FC	14015172	11	58	1.41	32/50×5.0FC	OR41×1.78	32/50F
2"	60×5.0	332/60×5.0FC	140151612	11	68	1.23	32/60×5.0FC	OR50.52×1.78	None
2"	60×6.0	332/60×6.0FC	14015167	11	68	1.23	32/60×6.0FC	OR47.37×1.78	None
2 1/2"	60×5.0	340/60×5.0FC	14015179	12	68	2.11	40/60×5.0FC	OR50.52×1.78	40/60F
2 1/2"	72×7.0	340/72×7.0FC	1401517926	12		1.90	40/72×7.0FC	OR56.87×1.78	None
2 1/2"	75×5.0	340/75×5.0FC	14015182	13	82.8	1.95	40/75×5.0FC	OR63.22×1.78	None
3"	75×5.0	348/75×5.0FC	14015193	16	82.8	3.57	48/75×5.0FC	OR63.22×1.78	48/75F
3"	90×5.0	348/90×5.0FC	14015200	14	100.3	3.07	48/90×5.0FC	OR79×1.78	None

扩口法兰 SAE 3000PSI SAE J 518 Code 61



扩口法兰 (1/2"-3")

规格	管子尺寸	产品型号	产品代码	C	D	重量	椎体型号	O型圈尺寸	衬套型号
1/2"	16×2.0	308/16×2.0FD	14015003	10	19.7	0.22	08/16×2.0FD	OR12×1.0	08/16F
1/2"	18×2.0	308/18×2.0FD	14015013	11	21.9	0.21	08/18×2.0FD	OR14×1.0	08/18F
1/2"	20×2.2	308/20×2.0FD	14015023	9	24	0.22	08/20×2.0FD	OR20×1.0	08/20F
1/2"	25×2.5	308/25×2.5FD	14015033	9	29	0.22	08/25×2.5FD	OR20×1.0	None
1/2"	25×3.0	308/25×3.0FD	14015038	9	29	0.22	08/25×3.0FD	OR20×1.0	None
3/4"	20×2.0	312/20×2.0FD	14015053	12	24	0.36	12/20×2.0FD	OR20×1.0	12/20F
3/4"	20×2.5	312/20×2.5FD	14015059	12	24	0.31	12/20×2.5FD	OR15×1.0	12/20F
3/4"	25×2.5	312/25×2.5FD	14015064	9	29	0.34	12/25×2.5FD	OR20×1.0	12/25F
3/4"	25×3.0	312/25×3.0FD	14015069	10	29	0.34	12/25×3.0FD	OR20×1.0	12/25F
3/4"	30×3.0	312/30×3.0FD	14015078	9	36.5	0.31	12/30×3.0FD	OR23×1.0	None
1"	25×2.5	316/25×2.5FD	14015093	9	29	0.46	16/25×2.5FD	OR20×1.0	16/25F
1"	25×3.0	316/25×3.0FD	14015098	9	29	0.46	16/25×3.0FD	OR20×1.0	16/25F
1"	30×3.0	316/30×3.0FD	14015103	7	36.5	0.43	16/30×3.0FD	OR23×1.0	16/30F
1"	30×4.0	316/30×4.0FD	14015108	7	36.5	0.43	16/30×4.0FD	OR22×1.0	16/30F
1"	38×4.0	316/38×4.0FD	14015113	10	43.5	0.37	16/38×4.0FD	OR30×1.0	None
1 1/4"	30×3.0	320/30×3.0FD	14015123	10	36.5	0.61	20/30×3.0FD	OR23×1.0	20/30F
1 1/4"	30×4.0	320/30×4.0FD	1401512308	10	36.5	0.50	20/30×4.0FD	OR22×1.0	20/30F
1 1/4"	38×4.0	320/38×4.0FD	14015128	9	43.5	0.56	20/38×4.0FD	OR30×1.0	20/38F
1 1/4"	38×5.0	320/38×5.0FD	14015133	9	43.5	0.53	20/38×5.0FD	OR28×1.0	20/38F
1 1/4"	42×4.0	320/42×4.0FD	14015138	11	48	0.51	20/42×4.0FD	OR34×1.0	None
1 1/2"	30×3.0	324/30×3.0FD	14015144	14	36.5	0.91	24/30×3.0FD	OR23×1.0	24/30F
1 1/2"	38×4.0	324/38×4.0FD	14015148	13	43.5	1.02	24/38×4.0FD	OR30×1.0	24/38F
1 1/2"	42×4.0	324/42×4.0FD	14015153	13	48	0.97	24/42×4.0FD	OR34×1.0	24/42F
1 1/2"	50×5.0	324/50×5.0FD	140151603	11	58	0.86	24/50×5.0FD	OR41×1.78	None
2"	50×5.0	332/50×5.0FD	14015173	11	58	1.41	32/50×5.0FD	OR41×1.78	32/50F
2"	60×5.0	332/60×5.0FD	140151613	11	68	1.23	32/60×5.0FD	OR50.52×1.78	None
2"	60×6.0	332/60×6.0FD	14015168	11	68	1.23	32/60×6.0FD	OR47.37×1.78	None
2 1/2"	60×5.0	340/60×5.0FD	140151791	12	68	2.11	40/60×5.0FD	OR50.52×1.78	40/60F
2 1/2"	72×7.0	340/72×7.0FD	1401517928	12	---	1.90	40/72×7.0FD	OR56.87×1.78	None
2 1/2"	75×5.0	340/75×5.0FD	14015183	13	82.8	1.95	40/75×5.0FD	OR63.22×1.78	None
3"	75×5.0	348/75×5.0FD	14015194	16	82.8	3.57	48/75×5.0FD	OR79×1.78	48/75F
3"	90×5.0	348/90×5.0FD	14015201	14	100.3	3.07	48/90×5.0FD	OR79×1.78	None

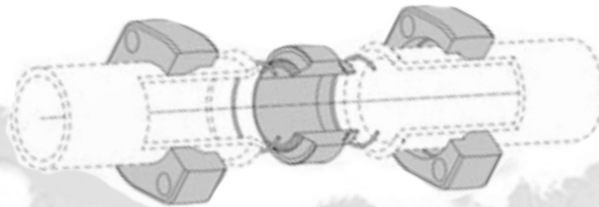
扩口法兰 SAE 6000PSI SAE J 518 Code 62



扩口法兰(1/2"-2")

规格	管子尺寸	产品型号	产品代码	C	D	重量	椎体型号	O型圈尺寸	O型圈尺寸	衬套型号
1/2"	16×2.0	608/16×2.0FA	14015210	10	19.7	0.27	08/16×2.0FA	OR18.64×3.53	OR12×1.0	08/16F
1/2"	18×2.0	608/18×2.0FA	14015215	11	21.9	0.27	08/18×2.0FA	OR18.64×3.53	OR14×1.0	08/18F
1/2"	20×2.0	608/20×2.0FA	14015220	9	24	0.26	08/20×2.0FA	OR18.64×3.53	OR16×1.0	08/20F
1/2"	25×2.5	608/25×2.5FA	1401522410	9	29	0.26	08/25×2.5FA	OR18.64×3.53	OR20×1.0	None
1/2"	25×3.0	608/25×3.0FA	14015225	9	29	0.24	08/25×3.0FA	OR18.64×3.53	OR20×1.0	None
3/4"	20×2.0	612/20×2.0FA	14015235	12	24	0.53	12/20×2.0FA	OR24.99×3.53	OR16×1.0	12/20F
3/4"	20×2.5	612/20×2.5FA	1401523705	12	24	0.54	12/20×2.5FA	OR24.99×3.53	OR15×1.0	12/20F
3/4"	25×2.5	612/25×2.5FA	14015240	9	29	0.50	12/25×2.5FA	OR24.99×3.53	OR20×1.0	12/25F
3/4"	25×3.0	612/25×3.0FA	14015245	10	29	0.51	12/25×3.0FA	OR24.99×3.53	OR20×1.0	12/25F
3/4"	30×3.0	612/30×3.0FA	14015250	9	36.5	0.48	12/30×3.0FA	OR24.99×3.53	OR23×1.0	None
3/4"	30×4.0	612/30×4.0FA	14015256	9	36.5	0.50	12/30×4.0FA	OR24.99×3.53	OR22×1.0	None
1"	25×2.5	616/25×2.5FA	14015260	9	29	0.69	16/25×2.5FA	OR32.92×3.53	OR20×1.0	16/25F
1"	25×3.0	616/25×3.0FA	1401526410	9	29	0.66	16/25×3.0FA	OR32.92×3.53	OR20×1.0	16/25F
1"	30×3.0	616/30×3.0FA	14015265	7	36.5	0.66	16/30×3.0FA	OR32.92×3.53	OR23×1.0	16/30F
1"	30×4.0	616/30×4.0FA	14015270	7	36.5	0.66	16/30×4.0FA	OR32.92×3.53	OR22×1.0	16/30F
1"	38×4.0	616/38×4.0FA	14015275	10	43.5	0.60	16/38×4.0FA	OR32.92×3.53	OR30×1.0	None
1 1/4"	30×3.0	620/30×3.0FA	14015285	10	36.5	1.08	20/30×3.0FA	OR37.69×3.53	OR23×1.0	20/30F
1 1/4"	30×4.0	620/30×4.0FA	1401528910	10	36.5	1.08	20/30×4.0FA	OR37.69×3.53	OR22×1.0	20/30F
1 1/4"	38×4.0	620/38×4.0FA	14015290	9	43.5	1.01	20/38×4.0FA	OR37.69×3.53	OR30×1.0	20/38F
1 1/4"	38×5.0	620/38×5.0FA	14015295	9	43.5	1.00	20/38×5.0FA	OR37.69×3.53	OR28×1.0	20/38F
1 1/4"	42×4.0	620/42×4.0FA	14015300	11	48	0.98	20/42×4.0FA	OR37.69×3.53	OR34×1.0	None
1 1/2"	30×3.0	624/30×3.0FA	14015306	14	36.5	1.16	24/30×3.0FA	OR47.22×3.53	OR23×1.0	24/30F
1 1/2"	38×4.0	624/38×4.0FA	14015310	13	43.5	1.76	24/38×4.0FA	OR47.22×3.53	OR30×1.0	24/38F
1 1/2"	38×5.0	624/38×5.0FA	1401531410	13	43.5	1.73	24/38×5.0FA	OR47.22×3.53	OR28×1.0	24/38F
1 1/2"	42×4.0	624/42×4.0FA	14015315	13	48	1.71	24/42×4.0FA	OR47.22×3.53	OR34×1.0	24/42F
1 1/2"	50×5.0	624/50×5.0FA	14015320	11	58	1.60	24/50×5.0FA	OR47.22×3.53	OR41×1.78	None
2"	50×5.0	632/50×5.0FA	14015330	11	58	2.70	32/50×5.0FA	OR56.75×3.53	OR41×1.78	32/50F
2"	60×5.0	632/60×5.0FA	14015335	11	68	2.52	32/60×5.0FA	OR56.75×3.53	OR50.52×1.78	None
2"	60×6.0	632/60×6.0FA	14015340	11	68	2.52	32/60×6.0FA	OR56.75×3.53	OR47.37×1.78	None

扩口法兰 SAE 6000PSI SAE J 518 Code 62



扩口法兰 (1/2"-2")

规格	管子尺寸	产品型号	产品代码	C	D	重量	椎体型号	O型圈尺寸	衬套尺寸
1/2"	16×2.0	608/16×2.0FB	14015211	10	19.7	0.27	08/16×2.0FB	OR12×1.0	08/16F
1/2"	18×2.0	608/18×2.0FB	14015215	11	21.9	0.27	08/18×2.0FB	OR14×1.0	08/18F
1/2"	20×2.0	608/20×2.0FB	14015220	9	24	0.26	08/20×2.0FB	OR16×1.0	08/20F
1/2"	25×2.5	608/25×2.5FB	1401522420	9	29	0.26	08/25×2.5FB	OR20×1.0	None
1/2"	25×3.0	608/25×3.0FB	14015226	9	29	0.24	08/25×3.0FB	OR20×1.0	None
3/4"	20×2.0	612/20×2.0FB	14015236	12	24	0.53	12/20×2.0FB	OR16×1.0	12/20F
3/4"	20×2.5	612/20×2.5FB	14015231	12	24	0.54	12/20×2.5FB	OR15×1.0	12/20F
3/4"	25×2.5	612/25×2.5FB	14015241	9	29	0.50	12/25×2.5FB	OR20×1.0	12/25F
3/4"	25×3.0	612/25×3.0FB	14015245	10	29	0.51	12/25×3.0FB	OR20×1.0	12/25F
3/4"	30×3.0	612/30×3.0FB	14015251	9	36.5	0.48	12/30×3.0FB	OR23×1.0	None
3/4"	30×4.0	612/30×4.0FB	140152371	9	36.5	0.50	12/30×4.0FB	OR22×1.0	None
1"	25×2.5	616/25×2.5FB	14015261	9	29	0.69	16/25×2.5FB	OR20×1.0	16/25F
1"	25×3.0	616/25×3.0FB	1401526420	9	29	0.66	16/25×3.0FB	OR20×1.0	16/25F
1"	30×3.0	616/30×3.0FB	14015266	7	36.5	0.66	16/30×3.0FB	OR23×1.0	16/30F
1"	30×4.0	616/30×4.0FB	14015271	7	36.5	0.66	16/30×4.0FB	OR22×1.0	16/30F
1"	38×4.0	616/38×4.0FB	14015276	10	43.5	0.60	16/38×4.0FB	OR30×1.0	None
1 1/4"	30×3.0	620/30×3.0FB	14015286	10	36.5	1.08	20/30×3.0FB	OR23×1.0	20/30F
1 1/4"	30×4.0	620/30×4.0FB	1401528912	10	36.5	1.08	20/30×4.0FB	OR22×1.0	20/30F
1 1/4"	38×4.0	620/38×4.0FB	14015292	9	43.5	1.01	20/38×4.0FB	OR30×1.0	20/38F
1 1/4"	38×5.0	620/38×5.0FB	14015296	9	43.5	1.00	20/38×5.0FB	OR28×1.0	20/38F
1 1/4"	42×4.0	620/42×4.0FB	14015301	11	48	0.98	20/42×4.0FB	OR34×1.0	None
1 1/2"	30×3.0	624/30×3.0FB	14015307	14	36.5	1.16	24/30×3.0FB	OR23×1.0	24/30F
1 1/2"	38×4.0	624/38×4.0FB	14015311	13	43.5	1.76	24/38×4.0FB	OR30×1.0	24/38F
1 1/2"	38×5.0	624/38×5.0FB	1401531410	13	43.5	1.73	24/38×5.0FB	OR28×1.0	24/38F
1 1/2"	42×4.0	624/42×4.0FB	14015316	13	48	1.71	24/42×4.0FB	OR34×1.0	24/42F
1 1/2"	50×5.0	624/50×5.0FB	14015321	11	58	1.60	24/50×5.0FB	OR41×1.78	None
2"	50×5.0	632/50×5.0FB	14015331	11	58	2.70	32/50×5.0FB	OR41×1.78	32/50F
2"	60×5.0	632/60×5.0FB	14015336	11	68	2.52	32/60×5.0FB	OR50.52×1.78	None
2"	60×6.0	632/60×6.0FB	14015341	11	68	2.52	32/60×6.0FB	OR47.37×1.78	None

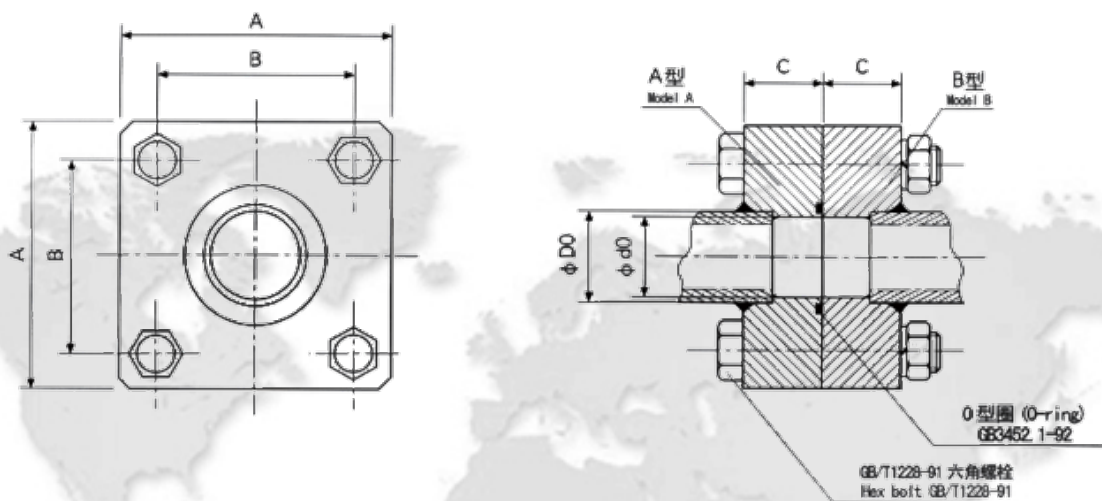
扩口法兰 SAE 6000PSI SAE J 518 Code 62



扩口法兰 (1/2"-2")

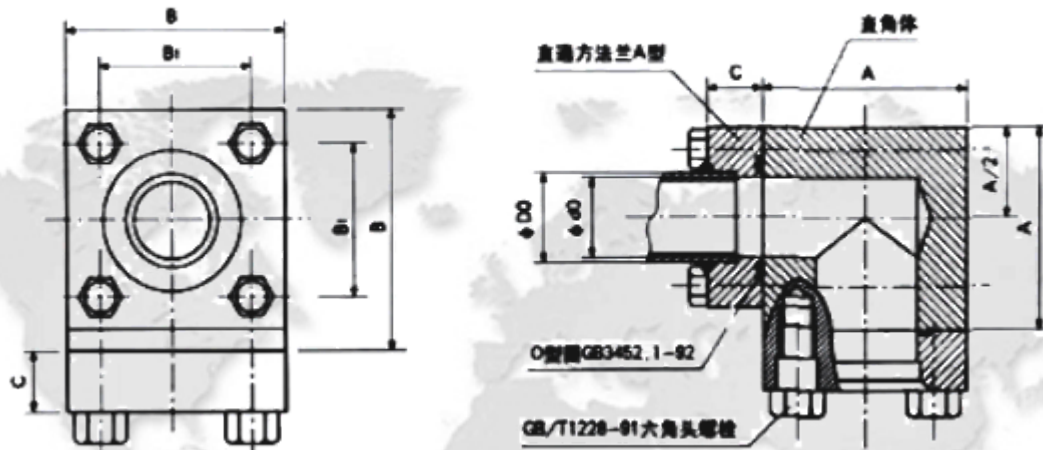
规格	管子尺寸	产品型号	产品代码	C	D	重量	锥体型号	O型圈尺寸	衬套尺寸
1/2"	16×2.0	608/16×2.0FC	14015212	10	19.7	0.27	08/16×2.0FC	OR12×1.0	08/16F
1/2"	18×2.0	608/18×2.0FC	14015217	11	21.9		08/18×2.0FC	OR14×1.0	08/18F
1/2"	20×2.0	608/20×2.0FC	14015222	9	24	0.26	08/20×2.0FC	OR16×1.0	08/20F
1/2"	25×2.5	608/25×2.5FC	1401522430	9	29	0.26	08/25×2.5FC	OR20×1.0	None
1/2"	25×3.0	608/25×3.0FC	14015227	9	29	0.24	08/25×3.0FC	OR20×1.0	None
3/4"	20×2.0	612/20×2.0FC	14015237	12	24	0.53	12/20×2.0FC	OR16×1.0	12/20F
3/4"	20×2.5	612/20×2.5FC	14015238	12	24	0.54	12/20×2.5FC	OR15×1.0	12/20F
3/4"	25×2.5	612/25×2.5FC	14015242	9	29	0.50	12/25×2.5FC	OR20×1.0	12/25F
3/4"	25×3.0	612/25×3.0FC	14015247	10	29	0.51	12/25×3.0FC	OR20×1.0	12/25F
3/4"	30×3.0	612/30×3.0FC	14015252	9	36.5	0.48	12/30×3.0FC	OR23×1.0	None
3/4"	30×4.0	612/30×4.0FC	14015258	9	36.5	0.50	12/30×4.0FC	OR22×1.0	None
1"	25×2.5	616/25×2.5FC	14015262	9	29	0.69	16/25×2.5FC	OR20×1.0	16/25F
1"	25×3.0	616/25×3.0FC	1401526430	9	29	0.66	16/25×3.0FC	OR02×1.0	16/25F
1"	30×3.0	616/30×3.0FC	14015267	7	36.5	0.66	16/30×3.0FC	OR23×1.0	16/30F
1"	30×4.0	616/30×4.0FC	14015272	7	36.5	0.66	16/30×4.0FC	OR22×1.0	16/30F
1"	38×4.0	616/38×4.0FC	14015277	10	43.5	0.60	16/38×4.0FC	OR30×1.0	None
1 1/4"	30×3.0	620/30×3.0FC	14015287	10	36.5	1.08	20/30×3.0FC	OR23×1.0	20/30F
1 1/4"	30×4.0	620/30×4.0FC	1400528914	10	36.5	1.08	20/30×4.0FC	OR22×1.0	20/30F
1 1/4"	38×4.0	620/38×4.0FC	14015293	9	43.5	1.01	20/38×4.0FC	OR30×1.0	20/38F
1 1/4"	38×5.0	620/38×5.0FC	14015297	9	43.5	1.00	20/38×5.0FC	OR28×1.0	20/38F
1 1/4"	42×4.0	620/42×4.0FC	14015302	11	48	0.98	20/42×4.0FC	OR34×1.0	None
1 1/2"	30×3.0	624/30×3.0FC	14015308	14	36.5	1.16	24/30×3.0FC	OR23×1.0	24/30F
1 1/2"	38×4.0	624/38×4.0FC	14015312	13	43.5	1.76	24/38×4.0FC	OR30×1.0	24/38F
1 1/2"	38×5.0	624/38×5.0FC	1401531414	13	43.5	1.73	24/38×5.0FC	OR28×1.0	24/38F
1 1/2"	42×4.0	624/42×4.0FC	14015317	13	48	1.71	24/42×4.0FC	OR34×1.0	24/42F
1 1/2"	50×5.0	624/50×5.0FC	14015322	11	58	1.60	24/50×5.0FC	OR41×1.78	None
2"	50×5.0	632/50×5.0FC	14015332	11	58	2.70	32/50×5.0FC	OR41×1.78	32/50F
2"	60×5.0	632/60×5.0FC	14015337	11	68	2.52	32/60×5.0FC	OR50.52×1.78	None
2"	60×6.0	632/60×6.0FC	14015342	11	68	2.52	32/60×6.0FC	OR47.37×1.78	None

L/F1G 直通通方法兰



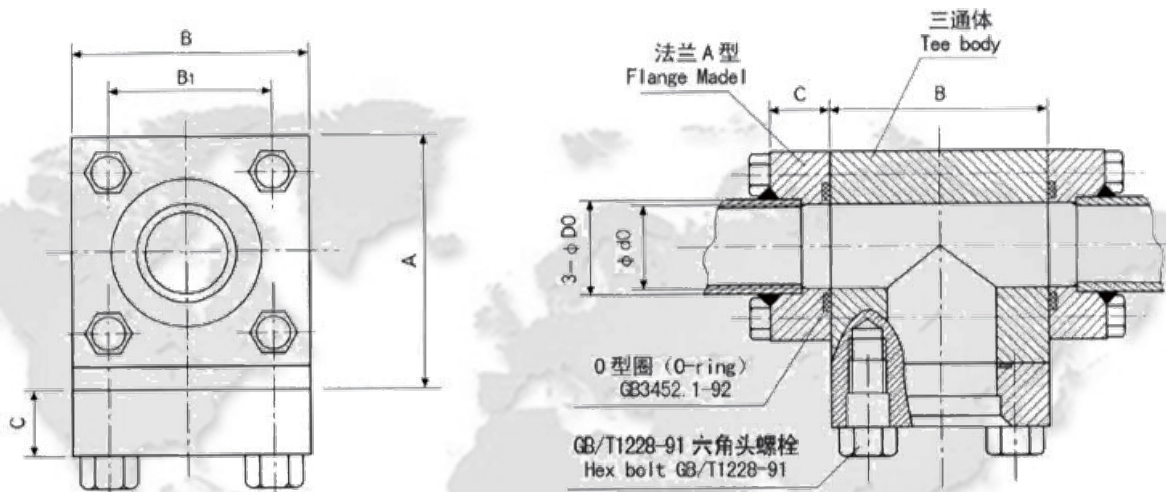
订货号 Ordering code L/F1G-	公称通径 Nominal diameter DN	D0	A	B	C	d0	M	O型圈 o-ring	六角螺栓 Hex bolt
公称压力(Nominal pressure) ≤ 42Mpa									
L/F1G - 8	8	14	55	32	22	13	8	21.5 × 3.55	M10 X 60
L/F1G - 10	10	18	60	37	22	16	8	25 × 3.55	M10 X 60
L/F1G - 15	15	22	65	42	22	20	10	28 × 3.55	M10 X 60
L/F1G - 20	20	27	72	45	28	25	10	32.5 × 3.55	M12 X 75
L/F1G - 25	25	34	80	52	28	32	12	40 × 3.55	M12 X 75
L/F1G - 32	32	42	90	62	30	40	12	47.5 × 3.55	M14X 80
L/F1G - 40	40	48	102	70	35	46	14	54.5 × 3.55	M16X 90
L/F1G - 50	50	60	120	85	40	57	16	67 × 3.55	M20X 100
L/F1G - 65	65	76	130	98	40	73	18	82.5 × 3.55	M20X100
L/F1G - 80	80	89	150	110	48	86	20	95 × 3.55	M22X 130
L/F1G - 100	100	114	170	125	50	110	24	118 × 3.55	M22X 130
公称压力(Nominal pressure) ≤ 16Mpa									
L/F1G - 125	125	139	200	150	56	134	24	140 × 3.55	M24 X 150
L/F1G - 150	150	168	230	175	60	164	24	170 × 3.55	M24 X 160

L/F2G 直角方法兰



订货号 Ordering code L/F2G-	公称通径 Nominal diameter DN	D0	F	B1	C	A	d0	M	O型圈 O-ring
公称压力(Nominal pressure) ≤ 42Mpa									
L/F2G - 8	8	14	55	32	22	70	13	10 × 40	21.5 × 3.55
L/F2G - 10	10	18	60	37	22	75	16	10 × 40	25 × 3.55
L/F2G - 15	15	22	65	42	22	80	20	10 × 40	28 × 3.55
L/F2G - 20	20	27	72	45	28	85	25	12 × 45	32.5 × 3.55
L/F2G - 25	25	34	80	52	28	92	32	12 × 45	40 × 3.55
L/F2G - 32	32	42	90	62	30	102	40	14 × 50	47.5 × 3.55
L/F2G - 40	40	48	102	70	35	114	46	16 × 55	54.5 × 3.55
L/F2G - 50	50	60	120	85	40	132	57	20 × 60	67 × 3.55
L/F2G - 65	65	76	130	98	40	145	73	20 × 60	82.5 × 3.55
L/F2G - 80	80	89	150	110	48	165	86	22 × 70	95 × 3.55
L/F2G - 100	100	114	170	125	50	185	110	22 × 75	118 × 3.55
公称压力(Nominal pressure) ≤ 16Mpa									
L/F2G - 125	125	139	200	150	56	215	134	24 × 80	140 × 3.55
L/F2G - 150	150	168	230	175	60	248	164	24 × 90	170 × 3.55

L/F3G 三通方法兰



订货号 Ordering code L/F3G-	公称通径 Nominal diameter DN	D0	B	B1	C	A	d0	M	型圈 O-ring
公称压力(Nominal pressure) $\leq 42\text{Mpa}$									
L/F3G - 8	8	14	55	32	22	70	13	10 × 40	21.5 × 3.55
L/F3G - 10	10	18	60	37	22	75	16	10 × 40	25 × 3.55
L/F3G - 15	15	22	65	42	22	80	20	10 × 40	28 × 3.55
L/F3G - 20	20	27	72	45	28	85	25	12 × 45	32.5 × 3.55
L/F3G - 25	25	34	80	52	28	92	32	12 × 45	40 × 3.55
L/F3G - 32	32	42	90	62	30	102	40	14 × 50	47.5 × 3.55
L/F3G - 40	40	48	102	70	35	114	46	16 × 55	54.5 × 3.55
L/F3G - 50	50	60	120	85	40	132	57	20 × 60	67 × 3.55
L/F3G - 65	65	76	130	98	40	145	73	20 × 60	82.5 × 3.55
L/F3G - 80	80	89	150	110	48	165	86	22 × 70	95 × 3.55
L/F3G - 100	100	114	170	125	50	185	110	22 × 75	118 × 3.55
公称压力(Nominal pressure) $\leq 16\text{Mpa}$									
L/F3G - 125	125	139	200	150	56	215	134	24 × 80	140 × 3.55
L/F3G - 150	150	168	230	175	60	248	164	24 × 90	170 × 3.55